



EMIS-MAIL *for Prisons and Correctional Facilities*

METAL DETECTOR FOR LETTER, PARCEL AND PERSONAL BELONGINGS INSPECTION

- Detection of all metal contraband (including disposable razor blades and paperclips)
- Extremely high sensitivity for detection beyond NIJ 0602.02 Very Small Object level
- Portable design: up to 12 hours continuous use from rechargeable batteries
- Simple automated screening requires minimal training and no prior knowledge



Versatile application for use in:

- Special Housing Units
- Cell Shake-Down
- Mail Room and more

No installation, calibration or periodic maintenance required



Scan QR code to see the video



www.ceia.net

Threat Detection through Electromagnetics

The **EMIS-MAIL** is designed to provide a portable solution for screening letters, Parcels and personal belongings, **detecting very small metal contraband** such as disposable razor blades, paperclips, ammunition, etc.



The EMIS-MAIL is uniquely **qualified to operate in a prison or correctional facility environment** with specific settings that meet and exceed those required by the **NIJ 0602.02 Standard**.

BENEFITS

- Meets detection requirements for each level of the NIJ 0602.02 Standard
- Exceeds NIJ 0602.02 Very Small Object level
- Operates both on the mains power supply and with NiMH rechargeable batteries (optional)
- Up to 12 hours continuous battery operation with 6 hours charge
- Designed for portable use: no installation, calibration or periodic maintenance required
- Very easy to use, inspects parcels and letters up to 450 mm in width and 75 mm thickness
- Pinpoint exact location of threats within scanned items

EASY INSTALLATION AND USE

The EMIS-MAIL is very easy to use and provides a fast and automatic alarm/no alarm signal confirmation per each inspected package.

Its compact, ergonomic design along with the electric and NiMH rechargeable battery power supply allows for independent operation in a variety of locations.

An optional embedded radioactive detector is also available for radioactive material threat detection.

EMIS-MAIL CORRECTIONS APPLICATIONS

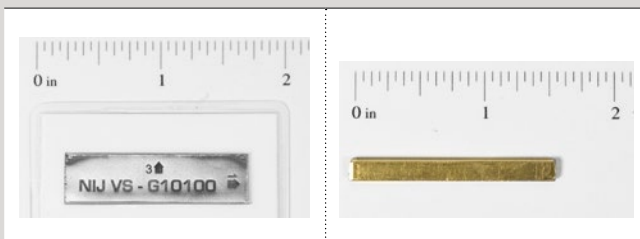
Versatile application for use in:

- Special Housing Units (SHU)
- Cell Shake-Downs
- Receiving and Discharge

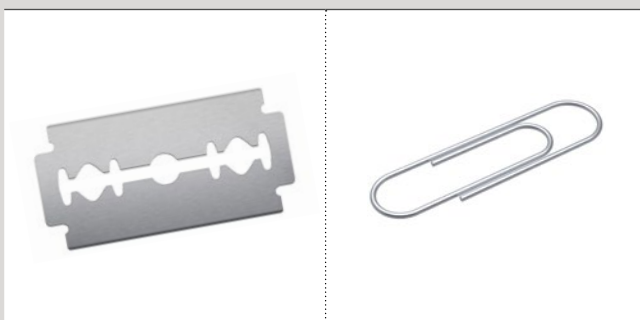
For the screening of:

- Library books and magazines designates for inmates
- Inmates personal belongings, hygiene items and food items
- Inmate clothing/shoes used for transport/bus operations

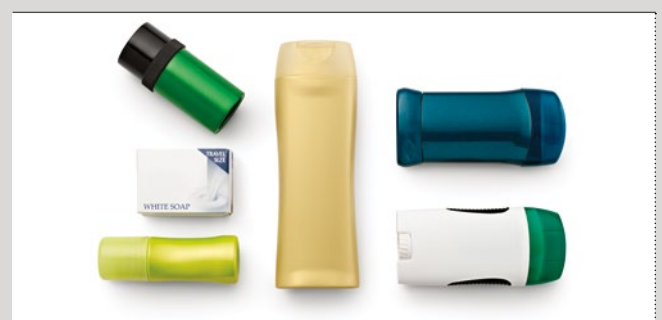
MEETS DETECTION REQUIREMENTS OF THE NIJ 0602.02 STANDARD



EXCEEDS NIJ 0602.02 VERY SMALL OBJECT LEVEL



PERSONAL HYGIENE ITEMS BEING SCREENED BY THE SCANNER



The **EMIS-MAIL** provides multiple pre-defined security programs allowing its use in a variety of prison applications, such as inmate mail screening versus staff mail screening.

Along with meeting the strictest safety and security standards, **EMIS-MAIL is also compliant with, and certified to, International Mail and Cargo screening Regulations** for the detection of metal components of parcel bombs without false alarms for non-threat items such as metal staples, paperclips and metal binding spirals.

SIMPLE AUTOMATED SCREENING REQUIRES MINIMAL TRAINING AND NO PRIOR KNOWLEDGE



EQUIPPED WITH SPECIAL PROGRAM THAT VISUALIZE THE LOCATION OF METAL CONTRABAND

- Single mass identified in the upper right corner of the object.



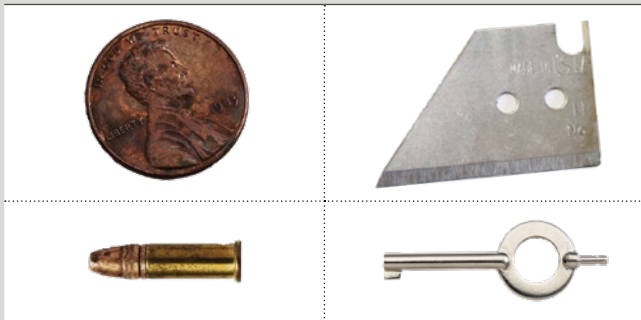
- Single mass identified in the upper right corner of the object.
- One or more additional masses can be present within the shaded zone.



- One or more masses can be present within the shaded zone.



POSSIBLE THREAT ITEMS: INMATE SCREENING



POSSIBLE THREAT ITEMS: STAFF MAIL



SPECIFICATIONS

KEY FEATURES	High inspection speed	
	No alarm on metal staples, paper-clips and metal binding spirals	
	Digital programming with high-resolution OLED graphic display	
	Optical and acoustic alarm signaling	
	Integrated autodiagnosis system	
	Permanent memory storage of operating parameters without back-up batteries	
	Independent operation, with mains power supply or batteries (optional)	
	Specific Settings available for Prison parcels inspection (Dept. of Justice requirements)	
Compliant with NIJ-0602.02 Dept. of Justice Detection requirements		
STRUCTURE	Transit opening	450 mm x 75 mm
	Degree of protection	IP40
DIMENSIONS	450 mm x 565 mm x 250 mm (WxDxH)	
WEIGHT	16 kg	
POWER SUPPLY	Voltage	100-240 V~ single-phase – 50/60 Hz with external AC/DC adapter
	Current	1.07 A max
	Battery operation (optional)	6 x 1.2V NiMH size D
		Battery life: 12 hours Battery-charger incorporated: recharging time 6 hours
PROGRAMMING	Type	Local: via integrated keypad Remote: via Bluetooth, RS232
	Data Logger Memory capacity	10.000 events
SIGNALLING	Acoustic	Internal buzzer
	Optical	High-contrast OLED graphic display with bar-graph indication
		LED indicators on the control panel
SECURITY/SAFETY	Access to programming protected by password Insulation from mains voltage	
COMMUNICATION	Incorporated Bluetooth (FCC ID: Q0QWT12 - IC:5123A-BGTWT12A) interface, RS232	
ENVIRONMENTAL DATA	Temperature	Operating -10 to +50 °C Storage -25 to +60 °C
	Relative humidity	5 to 90 %, without condensation
CONFORMITY*	SAFETY	EN61010-1
		ACGIH, 2014 Threshold Limit Value (TLV)
		IEEE C95.1-2005
		EC-Rec. 1999/519/EC
	EMC	EN 50364:2010
*Test Reports available upon request	EN61000-6-1	
	EN61000-6-3	
RED	EN300330: Short Range Devices (SRD)	

NATO STOCK NUMBER 6665150105807

ACCESSORIES / OPTIONS

GAMMA RADIATION DETECTION

A detector of radioactive sources can be included on demand. The gamma alarm indication includes the activity level (low/medium/high) and the CPS value (counts per second).

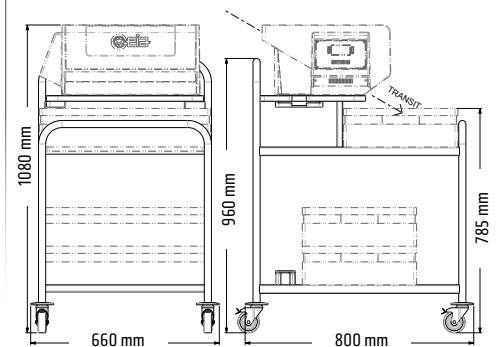
Analysis time: 5 seconds

TRANSPORT CASE Code 67226

EMIS-MAIL MOBILE STATION Code 76332

- Robust Stainless-Steel Cart, specially designed for optimal use of EMIS-MAIL.
- Includes up to three Plastic Boxes for mail collection.
- Wheels and locking brakes allow comfortable mobile deployment.

- 1 Plastic box for mail and parcels collection
- 2 Service/replacement box (3 Pcs.)
- 3 Seat reference test samples PASS / NO PASS
- 4 AISI 304 frame
- 5 Frame protection
- 6 Pivoting wheels + brake (4)



Zona Industriale 54/G, 52041 Vicinaggio - Arezzo (ITALY)

Tel.: +39 0575 4181 • Fax: +39 0575 418298 • E-mail: infosecurity@ceia-spa.com