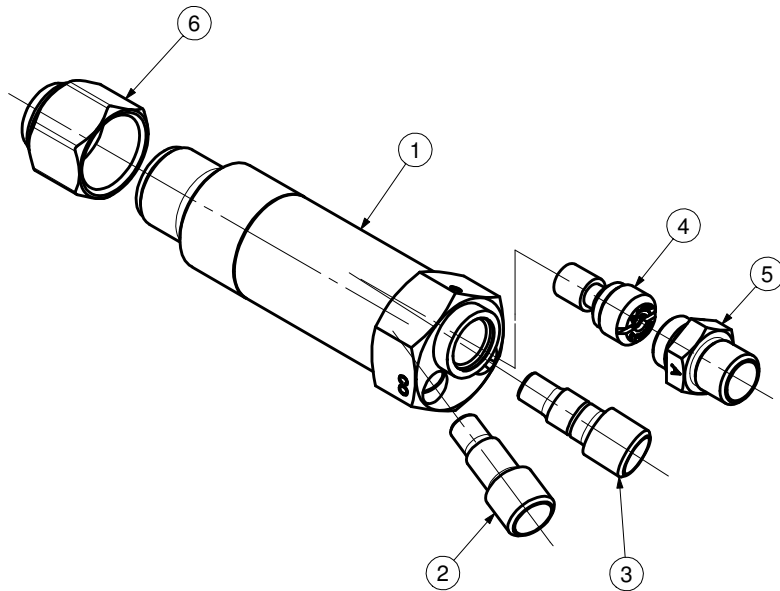


**MACHINE CUTTING TORCH
MODEL 133-2**

PART NUMBER/DESCRIPTION

Item	1*	4	5
MODEL No.	BODY	INJECTOR	CONNECTOR
1332	1332BLPS	C62	13319A
1332F	1332BLPS	C62F	13319F
133228	133228BLPS	C62	13319A
1332F28	133228BLPS	C62F	13319F



Note * : Complete with 6

ITEM	PART.No.	Qty	DESCRIPTION	ITEM	PART.No.	Qty	DESCRIPTION
1*	See Table	1	Body	4	See Table	1	Injector
2	133572R	1	Outlet	5	See Table	1	Connector
3	133572L	1	Outlet	6	6259B	1	Nut

SERVICE NOTES

ITEM No.	TORQUE SPECIFICATION	SERVICE TOOL OR NOTES
1		62T2A - 7/8"-20-UNEF-2A-RH - Die For Tip Nut Threads
		62T11A - To Regroove Tip Seat
		62T1C - To Reseat Tip Seat
		62T7 - 9/16"-27-UNS-3B-RH Tap For Injector And Cap Seat Threads
		62T3 - To Reseat Injector Cap Seat
2		U6244 - To Reseat Injector Seat
		52T2R - To Reseat Oxygen Hose Connection
3		52T3R - 9/16"-18-UNF-RH - Die Oxygen Hose Threads
		52T2L - To Reseat Fuel Hose Connection
4	81-92 kgcm	52T3L - 9/16"-18-UNF-LH - Die Fuel Hose Threads
		Screw Driver
5	81-92 kgcm	18mm Open end Wrench
		52T2R - To Reseat Oxygen Cutting Hose Connection
6		52T3R - 9/16"-18-UNF-RH - Die Oxygen Cutting Hose Threads
		25mm Open end Wrench

IMPORTANT: All repairs or conversions should be carried out by a qualified repairer, with genuine HARRIS parts, to HARRIS repair specifications, and in accordance with local laws or regulations. No contaminant (grease, oil, others) to come in contact with oxygen.