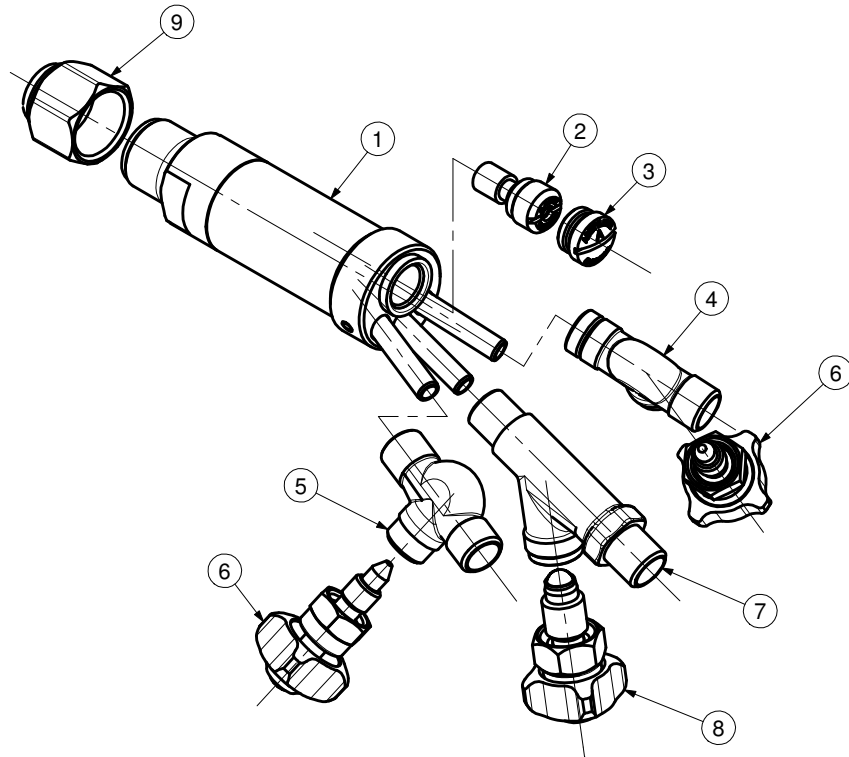


MACHINE CUTTING TORCH
MODEL 133-2V

PART NUMBER/DESCRIPTION

Item	1*	2	3
MODEL No.	BODY	INJECTOR	CAP
1332V	1332V30BLPS	C62	62193
1332V28	1332V28BLPS	C62	62193
1332FV	1332V30BLPS	C62F	62193F
1332FV28	1332V28BLPS	C62F	62193F



Note * : Complete with 9

ITEM	PART.No.	Qty	DESCRIPTION	ITEM	PART.No.	Qty	DESCRIPTION
1*	See Table	1	Body	6	A62GBPS	2	Valve
2	See Table	1	Injector	7	13310C	1	Body
3	See Table	1	Cap	8	L972EPS	1	Valve
4	5210133L	1	Body (gas)	9	6259B	1	Nut
5	5210133R	1	Body (ox)				

SERVICE NOTES

ITEM No.	TORQUE SPECIFICATION	SERVICE TOOL OR NOTES
1		62T2A - 7/8"-20-UNEF-2A - Die For Tip Nut Threads
		62T11A - To Regroove Tip Seat
		62T1C - To Reseat Tip Seat
		62T7 - 9/16"-27-UNS-3B - Tap For Injector And Cap Seat Threads
		62T3 - To Reseat Injector Cap Seat
		U6244 - To Reseat Injector Seat
2 - 3	81-92 kgcm	Screw Driver
4		52T2L - To Reseat Fuel Hose Connection
		52T3L - 9/16"-18-UNF-LH - Die Fuel Hose Threads
		62T9 - 9/16"-27-UNS-3A - Die For Needle Valve Threads
		13T2 - 3/8"-24-UNF-3B - Tap For Needle Valve Threads
5		RT14288 - To Reseat Needle Valve Seat
		52T2R - To Reseat Oxygen Hose Connection
		52T3R - 9/16"-18-UNF-RH - Die Oxygen Hose Threads
		62T9 - 9/16"-27-UNS-3A - Die For Needle Valve Threads
6	62 kgcm	13T2 - 3/8"-24-UNF-3B - Tap For Needle Valve Threads
		RT14288 - To Reseat Needle Valve Seat
		17mm Open end Wrench - Use Molykote M-55
7		RT1982 - 1/2"-16-UNS-RH - Tap For H.P. Needle Valve Threads
		RT897 - 11/16"-27-UNS-RH - Die For H.P. Needle Valve Threads
		97T1 - To Reseat H.P. Needle Valve Seat
		52T2R - To Reseat H.P. Oxygen Hose Connection
8	70 kgcm	52T3R - 9/16"-18-UNF-RH - Die For H.P. Oxygen Hose Threads
		19mm Open end Wrench - Use Molykote M-55
9		25mm Open end Wrench

IMPORTANT: All repairs or conversions should be carried out by a qualified repairer, with genuine HARRIS parts, to HARRIS repair specifications, and in accordance with local laws or regulations. No contaminant (grease, oil, others) to come in contact with oxygen.