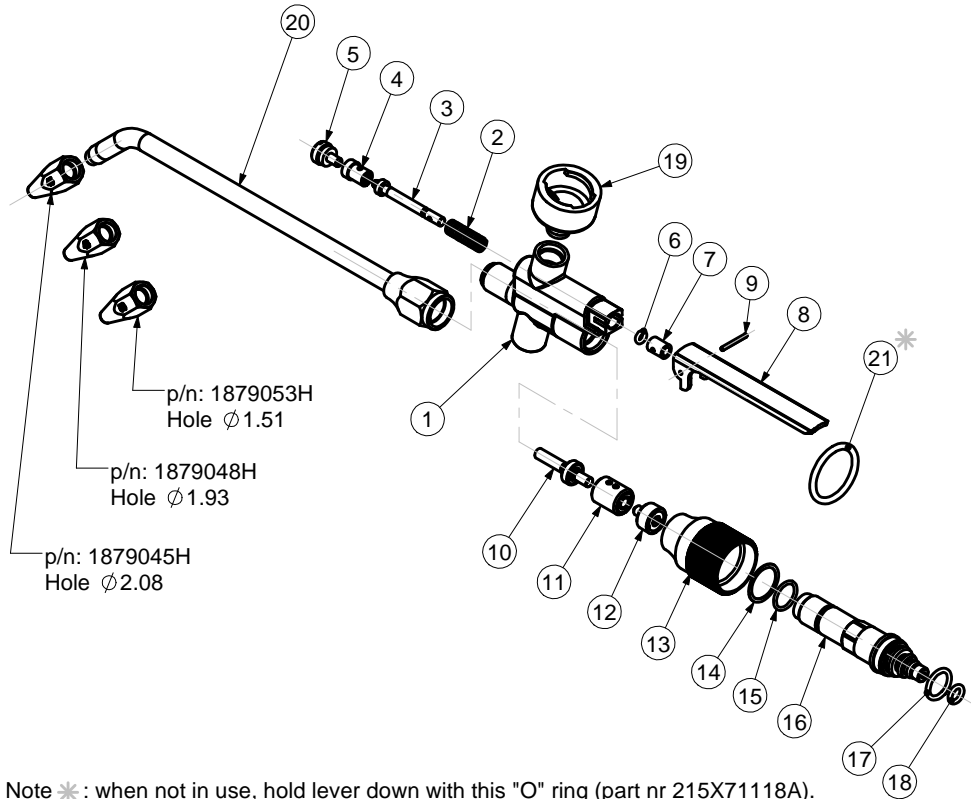


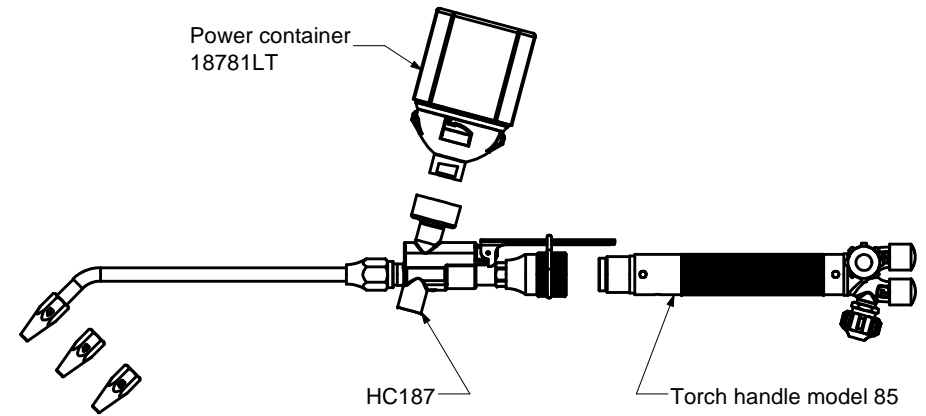


**POWDER SPRAY TORCH  
-MODEL 187**



Note \* : when not in use, hold lever down with this "O" ring (part nr 215X71118A).  
(Otherwise lever pressure might close the internal rubber valve and interfere with smooth powder flow).

ITEM	PART No.	QTY	DESCRIPTION	ITEM	PART No.	QTY	DESCRIPTION
1	VH187	1	Assembly body	12	18758	1	Nozzle
2	18785	1	Spring	13	H8559	1	Attachment nut
3	118766	1	Plunger	14	8596	1	Washer
4	18795	1	Valve	15	215X715058A	1	O-Ring
5	18777	1	Screw	16	H18786	1	Stem
6	215X715A	1	O-Ring	17	215X7113A	1	O-Ring
7	118783	1	Side	18	215X719A	1	O-Ring
8	H18753	1	Lever	19	18704	1	Adaptor
9	187X61	1	Pin	20	B187	1	Tip extension
10	18755	1	Injector	21	215X71118A	1	O-Ring
11	187822	1	Sleeve				



**POWDER SPRAY TORCH MODEL 187**

SERVICE NOTES		
ITEM No.	TORQUE SPECIFICATION	SERVICE TOOL OR NOTES
1		<b>56T6</b> - 1/2"-27-UNS-3B-RH - For body inlet threads
		<b>RT894</b> - 7/16"-24-UNS-2B-RH - Tap for adaptor threads
		<b>RT1871</b> - 3/8"-32-UNEF-RH - Tap for screw threads
		<b>RT1872</b> - 1/2"-20-UNF-RH - Die for nut threads
5	2 Nm	Screw driver
16	23 Nm	1/2 inch open end wrench
<b>IMPORTANT:</b> All repairs or conversions should be carried out by a qualified repairer, with genuine HARRIS parts, to HARRIS repair specifications, and in accordance with local laws or regulations. No contaminant (grease, oil, others) to come in contact with oxygen.		