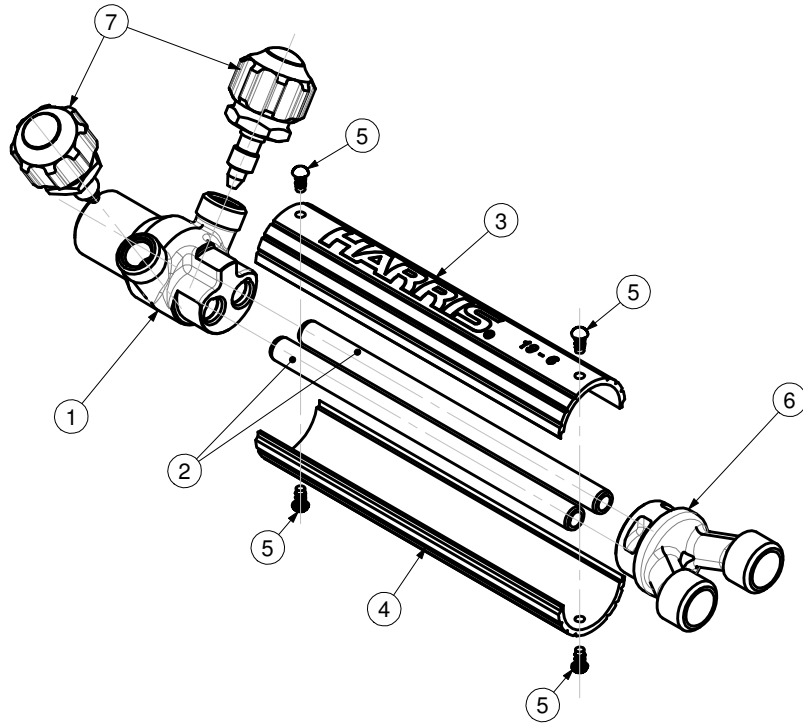




TORCH HANDLE
-MODEL 19-6-H11



ITEM	PART No.	Qty	DESCRIPTION	ITEM	PART No.	Qty	DESCRIPTION
1	1910H11	1	Body	5	13X61	4	Drive Screw
2	19922	1	Tube	6	1988H11	1	Tail
3	19432L	1	Handle half upper	7	B192PS	2	Valve
4	19432U	1	Handle half lower				

SERVICE NOTES		
ITEM No.	TORQUE SPECIFICATION	SERVICE TOOL OR NOTES
1		RTH111 - M17x1-6g-RH - Die for mixer threads
		19T1 - To reseal needle valve seat
		12T6 - 7/16"-27-UNS-3A-RH - Die for needle valve threads
		19T2 - 1/4"-28-UNF-3B-RH - Tap for needle valve stem threads
6		R19857RET1 - To reseal oxygen hose connection
		RT195 - G 1/4" A-RH - Die oxygen hose threads
		R19857LET1 - To reseal fuel hose connection
		RT196 - G 1/4" A-LH - Die fuel hose threads
7	3 Nm	13mm open end wrench - Use Molykote M-55
IMPORTANT: All repairs or conversions should be carried out by a qualified repairer, with genuine HARRIS parts, to HARRIS repair specifications, and in accordance with local laws or regulations. No contaminant (grease, oil, others) to come in contact with oxygen.		