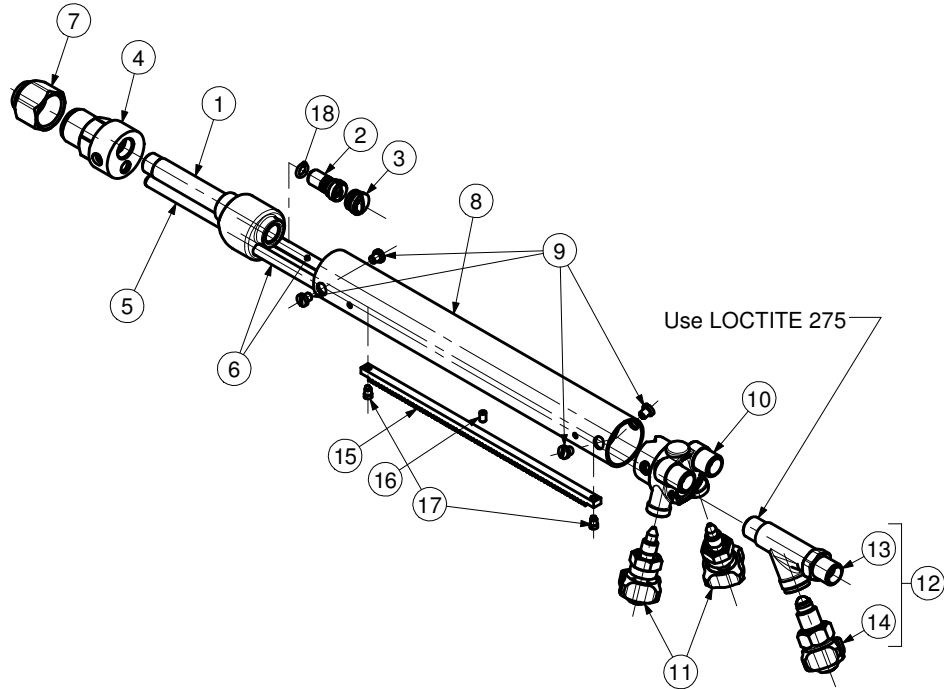


**HARRIS**

**MACHINE CUTTING TORCH MODEL 198-2TE  
EQUAL PRESSURE**



Note \* : Complete with 7

ITEM	PART.No.	Qty	DESCRIPTION	ITEM	PART.No.	Qty	DESCRIPTION
1	198102E	1	Body	10	See Table	1	Tail
2	6258EP	1	Mixer	11	A62GBPS	2	Valve
3	7919EP	1	Cap	12	E972C	1	Valve Compl.
4*	198442APS	1	Head	13	9710C	1	Body
5	See Table	1	Tube	14	L972E	1	Valve
6	See Table	2	Tube	15	See Table	1	Rack
7	6259B	1	Nut	16	See Table	1	Screw
8	See Table	1	Handle	17	See Table	2	Screw
9	2877	4	Screw	18	215X7110B	1	O-Ring

**PART NUMBER/DESCRIPTION**

Item	5	6	8	10	15	16	17
MODEL No.	TUBE	TUBE	HANDLE	TAIL	RACK	SCREW	SCREW
<b>1982TE</b>	9009913	19892	19843	198882TE			
<b>1982TE30</b>	9009913	19892	19843D30	19888TE30			
<b>1982TE35</b>	9009913	19892	B1984335	9009914			
<b>1982TAE</b>	9009917	19892A	19843A	198882TE			
<b>1982TAE30</b>	9009917	19892A	19843E30	19888TE30			
<b>1982TAE35</b>	9009917	19892A	B1984335A	9009914			
<b>1982TER</b>	9009913	19892	19843	198882TE	984032		9877
<b>1982TE30R</b>	9009913	19892	19843D30	19888TE30	984032		9877
<b>1982TE35R</b>	9009913	19892	B1984335	9009914	984032		9877
<b>1982TAER</b>	9009917	19892A	19843A	198882TE	98A4032	98X772	9877
<b>1982TAE30R</b>	9009917	19892A	19843E30	19888TE30	98A4032	98X772	9877
<b>1982TAE35R</b>	9009917	19892A	B1984335A	9009914	98A4032	98X772	9877

**SERVICE NOTES**

ITEM No.	TORQUE SPECIFICATION	SERVICE TOOL OR NOTES
1		56T6 - 1/2"-27-UNS-3B - Tap For Mixer And Cap Seat Threads 62T14 - To Reseat Mixer Cap Seat RT692 - To Reseat Mixer Seat
2 - 3	81 - 92 kgcm	Screw Driver
4		62T2A - 7/8"-20-UNEF-2A - Die For Tip Nut Threads 62T11A - To Regroove Tip Seat 62T1C - To Reseat Tip Seat
7		25mm Open end Wrench
9		Screw Driver
10		62T9 - 9/16"-27-UNS-3A-RH - Die For Needle Valve Threads 13T2 - 3/8"-24-UNF-3B-RH - Tap For Needle Valve Threads 76T2E - To Reseat Needle Valve Seat 52T2R - To Reseat Oxygen Hose Connection 52T2L - To Reseat Fuel Hose Connection 52T3R - 9/16"-18-UNF-3A-RH - Die Oxygen Hose Threads 52T3L - 9/16"-18-UNF-3A-LH - Die Fuel Hose Threads RT1983 - 1/4"-NPS-RH - Tap For Tail Inlet Threads
11	125 kgcm	17mm Open end Wrench - Use Molykote M-55
13		52T2R - To Reseat H.P. Oxygen Hose Connection 52T3R - 9/16"-18-UNF-3A-RH - Die H.P. Oxygen Hose Threads RT1982 - 1/2"-16-UNS-RH - Tap For H.P. Needle Valve Threads RT897 - 11/16"-27-UNS-RH - Die For H.P. Needle Valve Threads 97T1 - To Reseat H.P. Oxygen Needle Valve Seat
14	70 kgcm	19mm Open end Wrench - Use Molykote M-55
16		2mm Allen Hex Wrench - Use LOCTITE 641
17		Screw Driver - Use LOCTITE 641

**IMPORTANT:** All repairs or conversions should be carried out by a qualified repairer, with genuine HARRIS parts, to HARRIS repair specifications, and in accordance with local laws or regulations. No contaminant (grease, oil, others) to come in contact with oxygen.