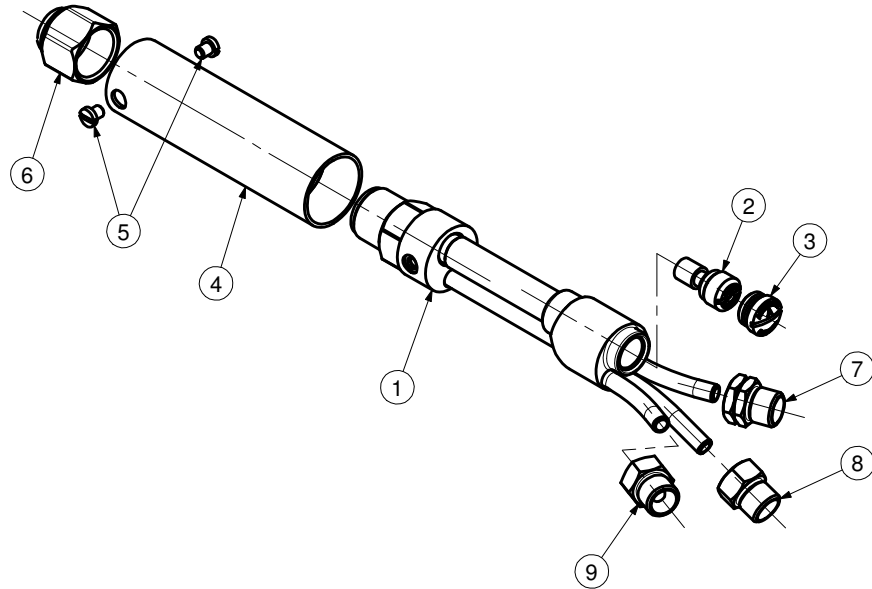


MACHINE CUTTING TORCH MODEL 198-4
UNIVERSAL PRESSURE



ITEM	PART.No.	Qty	DESCRIPTION	ITEM	PART.No.	Qty	DESCRIPTION
1	A1984	1	Body assy.	6	6259B	1	Nut
2	See Table	1	Injector	7	See Table	1	Nipple
3	See Table	1	Cap	8	See Table	1	Nipple
4	198434	1	Handle	9	See Table	1	Nipple
5	19877	2	Screw				

PART NUMBER/DESCRIPTION

Item	2	3	7	8	9
MODEL No.	INJECTOR	CAP	NIPPLE	NIPPLE	NIPPLE
1984	C62	62193	19857L	19857RCO	19857RHO
1984F	C62F	62193F	19857L	19857RCO	19857RHO
1984B	C62	62193	19857LE	19857RECO	19857REHO
1984BF	C62F	62193F	19857LE	19857RECO	19857REHO

SERVICE NOTES

ITEM No.	TORQUE SPECIFICATION	SERVICE TOOL OR NOTES
1		62T2A - 7/8"-20-UNEF-2A - Die For Tip Nut Threads 62T11A - To Regroove Tip Seat 62T1C - To Reseat Tip Seat 62T7 - 9/16"-27-UNS-3B - Tap For Injector And Cap Seat Threads 62T3 - To Reseat Injector Cap Seat U6244 - To Reseat Injector Seat
2	81 - 92 kgcm	Screw Driver
3	81 - 92 kgcm	Screw Driver
5		Screw Driver
6		25mm Open end Wrench
7		52T2L - To Reseat Fuel Hose Connection 52T3L - 9/16"-18-UNF-3A-LH - Die Fuel Hose Threads R19857LET1 - To Reseat Fuel Hose Connection (for B version) RT196 - G 1/4" A-LH - Die Fuel Hose Threads (for B version)
8 - 9		52T2R - To Reseat Oxygen Hose Connection 52T3R - 9/16"-18-UNF-3A-RH - Die Oxygen Hose Threads R19857RET1 - To Reseat Oxygen Hose Connection (for B version) RT195 - G 1/4" A-RH - Die Oxygen Hose Threads (for B version)

IMPORTANT: All repairs or conversions should be carried out by a qualified repairer, with genuine HARRIS parts, to HARRIS repair specifications, and in accordance with local laws or regulations. No contaminant (grease, oil, others) to come in contact with oxygen.