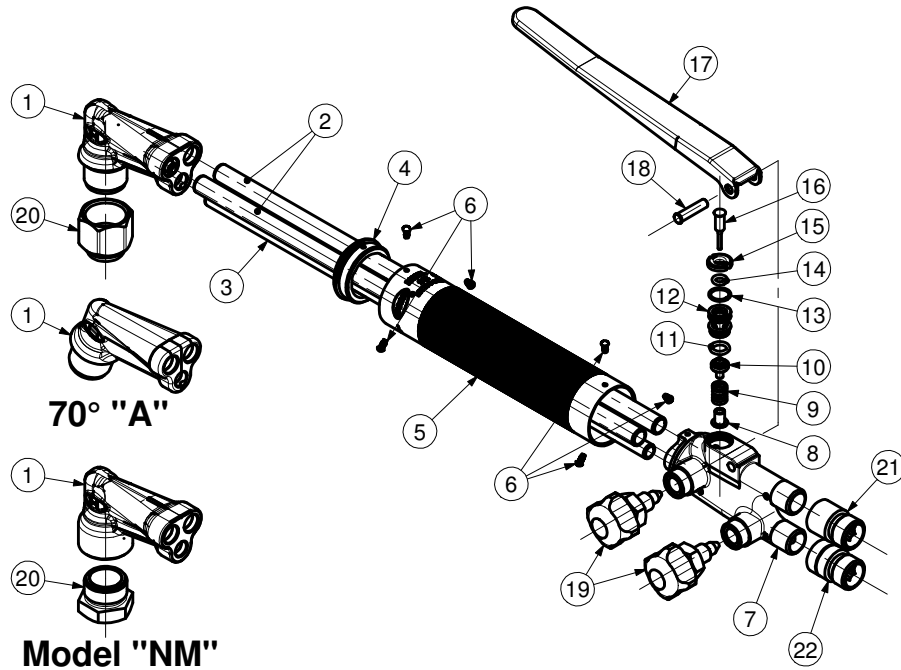




**HAND CUTTING TORCH  
EQUAL PRESSURE  
-MODEL 242-2  
-MODEL 242-2NM**



**70° "A"**

**Model "NM"**

ITEM	PART No.	Qty	DESCRIPTION	ITEM	PART No.	Qty	DESCRIPTION
1	See Table	1	Head + tip nut	12	24242	1	Guide
2	See Table	2	Tube	13	215X715057A	1	O-Ring
3	See Table	1	Tube	14	215X718A	1	O-Ring
4	242192	1	Cap	15	24204	1	Ring nut
5	See Table	1	Handle	16	24266	1	Plunger
6	13X61	6	Rivet	17	24253	1	Lever
7	242882	1	Tail	18	24261	1	Roll pin
8	242422	1	Guide	19	VA242	2	Valve
9	62851	1	Spring	20	See Table	1	Nut
10	B62A	1	Valve seat	21	See Table	1	Adaptor
11	215X715052A	1	O-Ring	22	See Table	1	Adaptor

PART NUMBER / DESCRIPTION							
Item	1	2	3	5	20	21	22
MODEL No.	HEAD + TIP NUT	TUBE	TUBE	HANDLE	NUT	ADAPTOR	ADAPTOR
2422	A242442PS	24292	242922	242432	6259B		
2422A	A242442APS	24292	242922	242432	6259B		
2422AL	A242442APS	7692	242923	242432	6259B		
2422L	A242442PS	7692	242923	242432	6259B		
2422GB	A242442PS	24292	242922	242432	6259B	382GBR	382GBL
2422AGB	A242442APS	24292	242922	242432	6259B	382GBR	382GBL
2422AGB	A242442APS	7692	242923	242432	6259B	382GBR	382GBL
2422LGB	A242442PS	7692	242923	242432	6259B	382GBR	382GBL
2422NM	242442NMPS	24292	242922	242432NM	4559		
2422NMA	242442ANMPS	24292	242922	242432NM	4559		
2422NMAL	242442ANMPS	7692	242923	242432NM	4559		
2422NML	242442NMPS	7692	242923	242432NM	4559		
2422NMGB	242442NMPS	24292	242922	242432NM	4559	382GBR	382GBL
2422NMAGB	242442ANMPS	24292	242922	242432NM	4559	382GBR	382GBL
2422NMLGB	242442ANMPS	7692	242923	242432NM	4559	382GBR	382GBL
2422NMLGB	242442NMPS	7692	242923	242432NM	4559	382GBR	382GBL

SERVICE NOTES		
ITEM No.	TORQUE SPECIFICATION	SERVICE TOOL OR NOTES
1		62T2A - 7/8"-20-UNEF - Die for tip nut threads
		62T11A - To regroove tip seat
		62T1C - To reseal tip seat
		5944T1 - 7/8"-20-UNEF-2B - Tap for tip nut threads (for model "NM")
7		R300T - To reseal tip seat (for model "NM")
		62T9 - 9/16"-27-UNS-3A - Die for needle valve threads
		13T2 - 3/8"-24-UNF-3B - Tap for needle valve threads
		76T2E - To reseal needle valve seat
		52T2R - To reseal oxygen hose connection
11 - 13 - 14		52T2L - To reseal fuel hose connection
		52T3R - 9/16"-18-RH - Die oxygen hose threads
		52T3L - 9/16"-18-LH - Die fuel hose threads
15		Use Molykote M-55
19	12 Nm	RT242 - Screw driver - Special slotted blade
20		17mm open end wrench - Use Molykote M-55
21 - 22	20 Nm	25mm open end wrench
		8mm allen hex wrench - Use Loctite 275

**IMPORTANT:** All repairs or conversions should be carried out by a qualified repairer, with genuine HARRIS parts, to HARRIS repair specifications, and in accordance with local laws or regulations. No contaminant (grease, oil, others) to come in contact with oxygen.