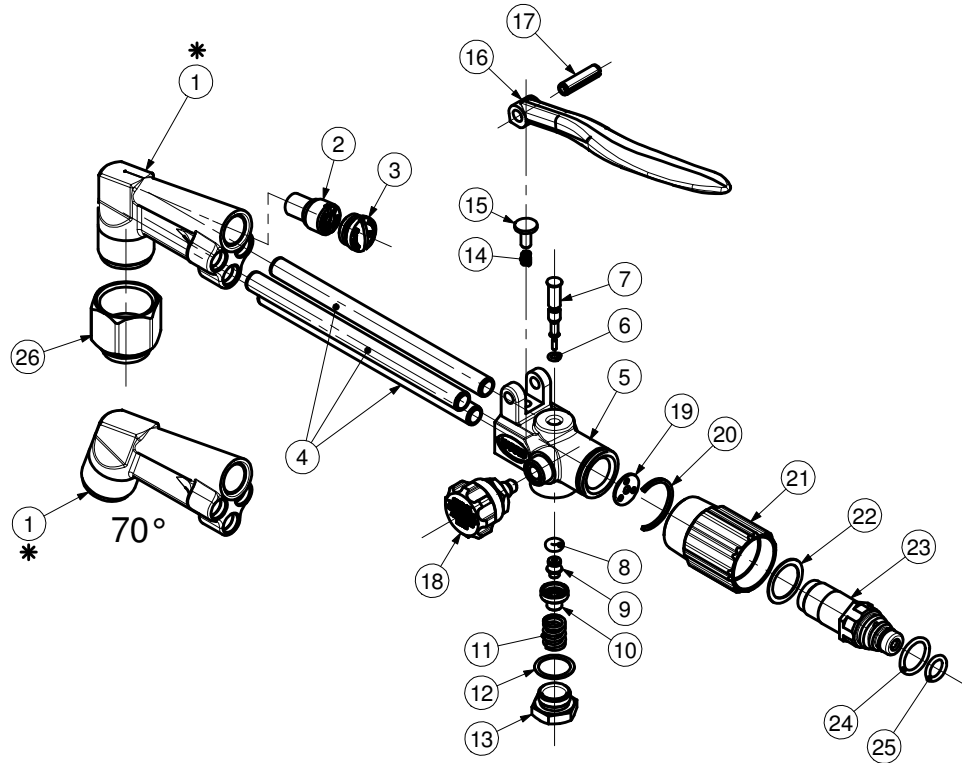


**CUTTING ATTACHMENT  
MODEL 49-3**



Note \* : When the head (1) is replaced, the injector (2) seat must be reset with tool p.n. U7944A

ITEM	PART.No.	Qty	DESCRIPTION	ITEM	PART.No.	Qty	DESCRIPTION
1*	See Table	1	Head	14	7985	1	Spring
2	See Table	1	Injector	15	7316	1	Button
3	See Table	1	Cap	16	7253	1	Lever
4	7992B	3	Cap	17	7361	1	Roll Pin
5	7310	1	Body	18	D42PS	1	Valve
6	215X715178A	1	O-Ring	19	7939	1	Gasket
7	9003145	1	Plunger	20	7371	1	Retaining Ring
8	9003144	1	O-Ring	21	7359PS	1	Nut
9	9003143	1	Valve	22	7296	1	Washer
10	9003142	1	Disc	23	73862	1	Stem
11	7385	1	Spring	24	215X7114A	1	O-Ring
12	7339	1	Gasket	25	215X7111A	1	O-Ring
13	7319	1	Plug	26	6259B	1	Nut

**PART NUMBER/DESCRIPTION**

Item	1 *	2	3
MODEL No.	HEAD	INJECTOR	CAP
493	A7944PS	A79	7919
493F	A7944PS	A79F	7919F
493A	A79442PS	A79	7919
493AF	A79442PS	A79F	7919F

**SERVICE NOTES**

ITEM No.	TORQUE SPECIFICATION	SERVICE TOOL OR NOTES
1		62T2A - 7/8"-20-UNEF-2A-RH - Die For Tip Nut Threads
		62T11A - To Regroove Tip Seat
		62T1C - To Reseat Tip Seat
		56T6 - 1/2"-27-UNS-3B-RH - Tap For Injector And Cap Seat Threads
		62T14 - To Reseat Injector Cap Seat
		U7944A - To Reseat Injector Seat
2	70 kgcm	Screw Driver
3	92 kgcm	Screw Driver
5		RT725 - .560"-36-UNS-3B-RH - Tap For Body Inlet Threads
		53T3 - 1/4"-32-UNEF-3B-RH - Tap For Needle Valve Threads
		53T1 - To Reseat Needle Valve Seat
		12T6 - 7/16"-27-UNS-3A-RH - Die For Needle Valve Threads
		T7310 - To Reseat H.P. Valve Seat
6 - 8		56T6 - 1/2"-27-UNS-3B-RH - Tap For Cap Valve Threads
6 - 8		Use Molykote M-55
13	95-110 kgcm	16mm Open end Wrench
18	62 kgcm	14mm Open end Wrench - Use Molykote M-55
23	276 kgcm	72T4 - To Remove And Fit Connector Stem
26		25mm Open end Wrench

**IMPORTANT:** All repairs or conversions should be carried out by a qualified repairer, with genuine HARRIS parts, to HARRIS repair specifications, and in accordance with local laws or regulations. No contaminant (grease, oil, others) to come in contact with oxygen.