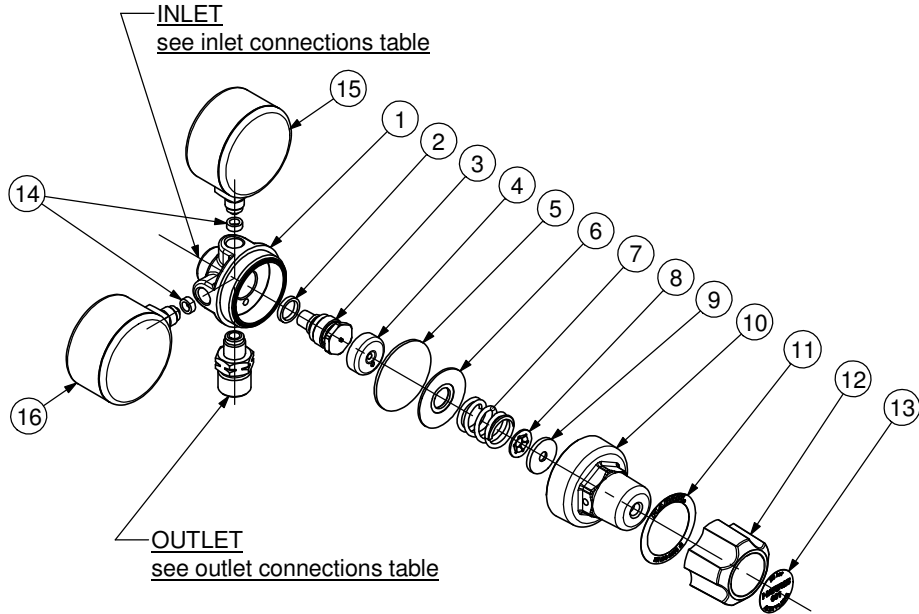


PRESSURE REGULATOR  
(REAR ENTRY)  
MODEL 601



ITEM	PART. No.	Qty	DESCRIPTION	ITEM	PART. No.	Qty	DESCRIPTION
1	601105	1	Body	9	See Table	1	Pivot
2	89539	1	Gasket	10	60111	1	Bonnet
3	9100845	1	Valve	11	See Table	1	Nameplate
4	60133	1	Disc	12	See Table	1	Knob
5	60132	1	Diaphragm	13	According To Country	1	Knob Disc
6	60133A	1	Diaphragm Disc	14	60139	2	Gasket
7	See Table	1	Spring	15	See Table	1	H.P. Gauge
8	See Table	1	Retaining Ring	16	See Table	1	L.P. Gauge

PART NUMBER/DESCRIPTION

Item	7	8	9	11	12	15	16
MODEL No.	SPRING	RETAINING RING	PIVOT	NAMEPLATE	KNOB	H.P. GAUGE	L.P. GAUGE
<b>601-1,5-AC</b>	601854	101597BB	601642	According To Country	601283	8E6014AC	8E6013AC
<b>601-4-LP</b>	601852	101597BB	601642	According To Country	601283	8E6014	8E6015
<b>601-10</b>	601853		92643		601282	8E6011	8E6016
<b>601-10-OX</b>	601853		92643	According To Country	601282	8E6011	8E6016

SERVICE NOTES

ITEM No.	TORQUE SPECIFICATION	SERVICE TOOL OR NOTES
3	250-300 kgcm	16mm Hex Socket Wrench
10	350-550 kgcm	26mm Hex Wrench
12		Lube With Fomblin RT 15 or Krytox GPL 226 Grease
15-16	70-300 kgcm	14mm Open End Wrench
OUTLET	300-500 kgcm	Wrench Hex Varies
INLET	480-700 kgcm	Wrench Hex Varies - Dry Joint

**IMPORTANT:** All repairs or conversions should be carried out by a qualified repairer, with genuine HARRIS parts, to HARRIS repair specifications, and in accordance with local laws or regulations. No contaminant (grease, oil, others) to come in contact with oxygen.