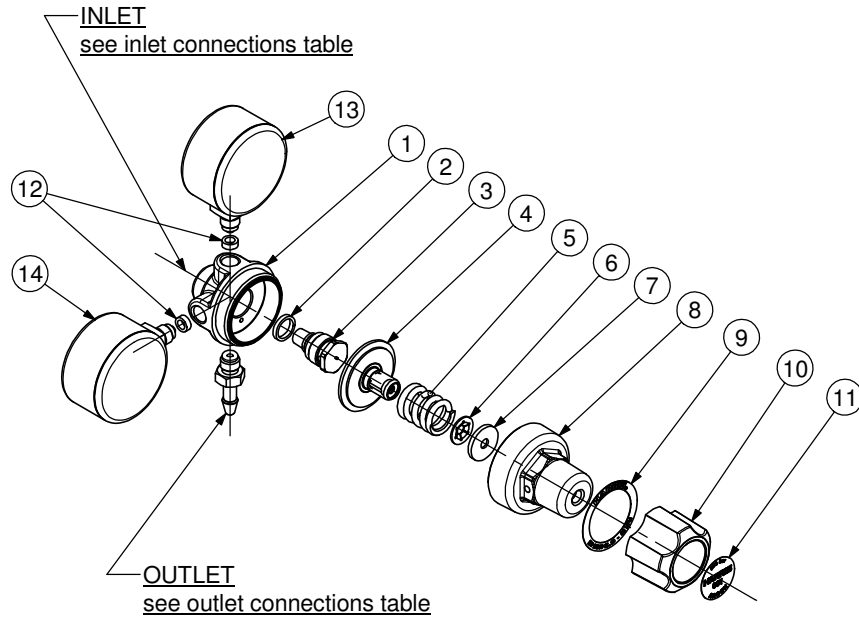


FLOWGAUGE REGULATOR
(REAR ENTRY)
MODEL 601DL



PART NUMBER/DESCRIPTION

Item	1	5	14
MODEL No.	BODY	SPRING	L.P. GAUGE
601D15L	601102	601852	8E6017
601D30L	601110	60185	8E6012

ITEM	PART. No.	Qty	DESCRIPTION	ITEM	PART. No.	Qty	DESCRIPTION
1	See Table	1	Body	8	60111	1	Bonnet
2	89539	1	Gasket	9	According To Country	1	Nameplate
3	9100843	1	Valve	10	601283	1	Knob
4	D6014	1	Diaphragm-Type SRV	11	According To Country	1	Knob Disc
5	See Table	1	Spring	12	60139	2	Gasket
6	101597BB	1	Retaining Ring	13	8E6011	1	H.P. Gauge
7	601642	1	Pivot	14	See Table	1	L.P. Gauge

SERVICE NOTES

ITEM No.	TORQUE SPECIFICATION	SERVICE TOOL OR NOTES
3	250-300 kgcm	16mm Hex Socket Wrench
8	350-550 kgcm	26mm Hex Wrench
10		Lube With Fomblin RT 15 or Krytox GPL 226 Grease
13-14	70-300 kgcm	14mm Open End Wrench
OUTLET	300-500 kgcm	Wrench Hex Varies
INLET	480-700 kgcm	Wrench Hex Varies - Dry Joint

IMPORTANT: All repairs or conversions should be carried out by a qualified repairer, with genuine HARRIS parts, to HARRIS repair specifications, and in accordance with local laws or regulations. No contaminant (grease, oil, others) to come in contact with oxygen.