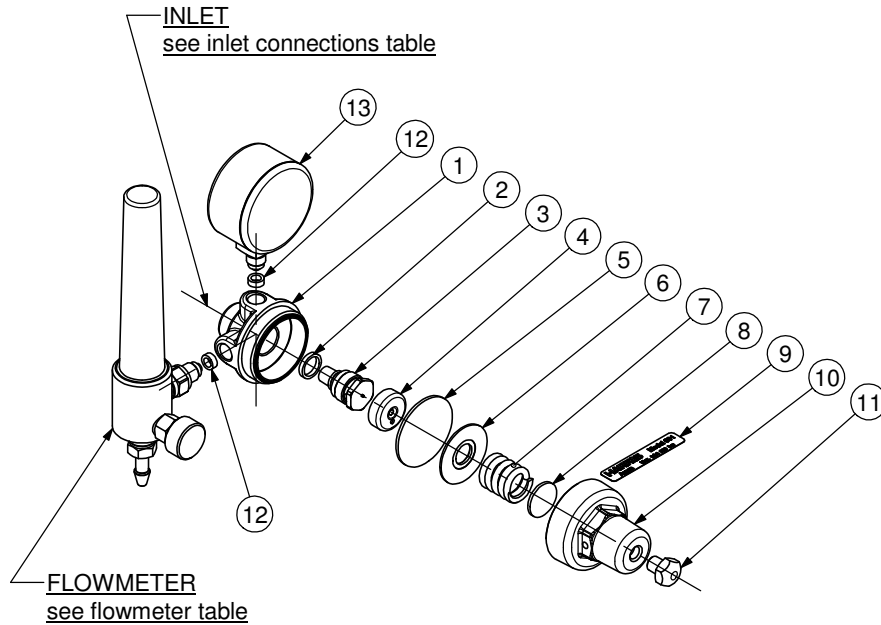


FLOWMETER REGULATOR  
(REAR ENTRY)  
MODEL 60115F  
60130F



ITEM	PART.No.	Qty	DESCRIPTION	ITEM	PART.No.	Qty	DESCRIPTION
1	601109	1	Body	8	92643	1	Pivot
2	89539	1	Gasket	9	According To Country	1	Nameplate
3	9100843	1	Valve	10	60111	1	Bonnet
4	60133	1	Disc	11	601773	1	Adjust screw
5	60132	1	Diaphragm	12	60139	2	Gasket
6	60133A	1	Diaphragm Disc	13	8E6011	1	H.P. Gauge
7	601855	1	Spring				

SERVICE NOTES

ITEM No.	TORQUE SPECIFICATION	SERVICE TOOL OR NOTES
3	250-300 kgcm	16mm Hex Socket Wrench
10	350-550 kgcm	26mm Hex Wrench
11		13mm Hex Socket Wrench
13	70-300 kgcm	14mm Open End Wrench
FLOWMETER	70-300 kgcm	14mm Open End Wrench
INLET	480-700 kgcm	Wrench Hex Varies - Dry Joint

**IMPORTANT:** All repairs or conversions should be carried out by a qualified repairer, with genuine HARRIS parts, to HARRIS repair specifications, and in accordance with local laws or regulations. No contaminant (grease, oil, others) to come in contact with oxygen.