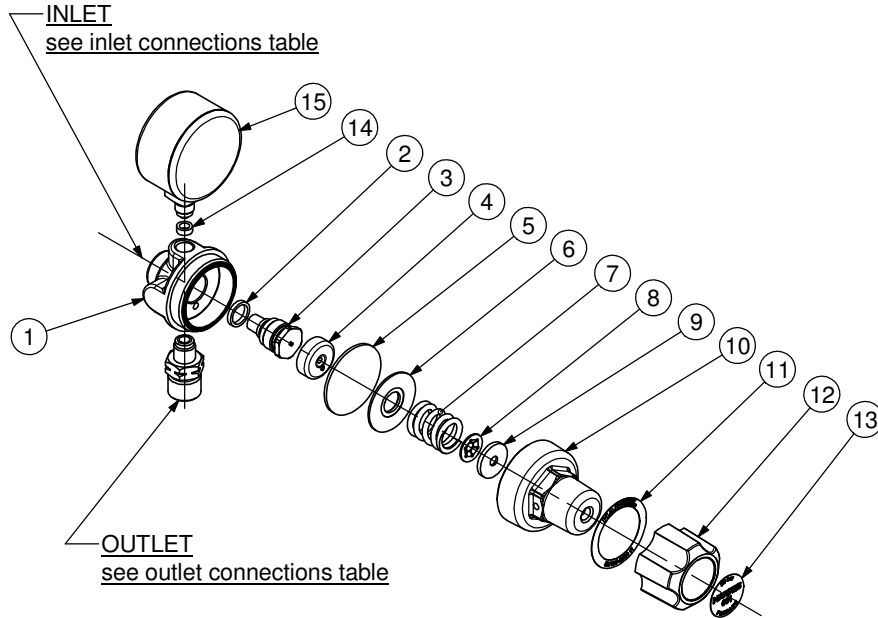


PRESSURE REGULATOR
(REAR ENTRY)
MODEL 601P4LP



ITEM	PART. No.	Qty	DESCRIPTION	ITEM	PART. No.	Qty	DESCRIPTION
1	6011012	1	Body	9	601642	1	Pivot
2	89539	1	Gasket	10	60111	1	Bonnet
3	9100845	1	Valve	11	According To Country	1	Nameplate
4	60133	1	Disc	12	601283	1	Knob
5	60132	1	Diaphragm	13	According To Country	1	Knob disc
6	60133A	1	Diaphragm Disc	14	60139	1	Gasket
7	601852	1	Spring	15	8E6015	1	L.P. Gauge
8	101597BB	1	Retaining Ring				

SERVICE NOTES

ITEM No.	TORQUE SPECIFICATION	SERVICE TOOL OR NOTES
3	250-300 kgcm	16mm Hex Socket Wrench
10	350-550 kgcm	26mm Hex Wrench
12		Lube With Fomblin RT 15 or Krytox GPL 226 Grease
15	70-300 kgcm	14mm Open End Wrench
OUTLET	300-500 kgcm	Wrench Hex Varies
INLET	480-700 kgcm	Wrench Hex Varies - Dry Joint

IMPORTANT: All repairs or conversions should be carried out by a qualified repairer, with genuine HARRIS parts, to HARRIS repair specifications, and in accordance with local laws or regulations. No contaminant (grease, oil, others) to come in contact with oxygen.