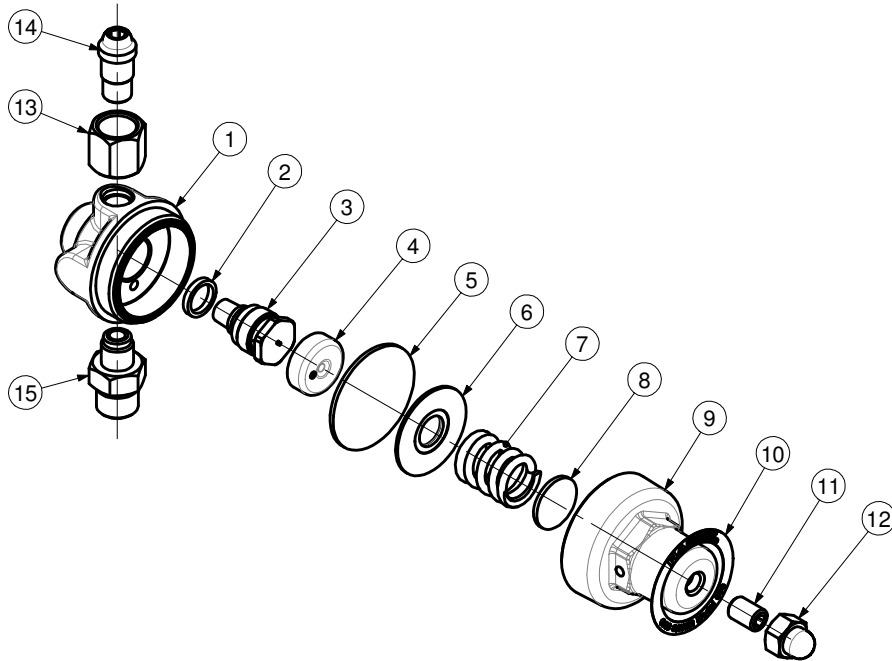




INERT GAS GUARD
-MODEL 603

PART NUMBER / DESCRIPTION					
Item	13		14	15	
MODEL No.	NUT	Thread	STEM	OUTLET	Thread
603Z001	E959R	G 3/8"-RH	I986E	60157SR	G 3/8" A-RH
603Z002	959R	9/16"-18-UNF-2B-RH	I9862	60157R	9/16"-18-UNF-2A-RH
603Z003	959HGR	G 1/4"-RH	9865HG	60157AR	G 1/4" A-RH



ITEM	PART No.	Qty	DESCRIPTION	ITEM	PART No.	Qty	DESCRIPTION
1	6011019	1	Body	9	60111	1	Bonnet
2	89539	1	Gasket	10	60365N	1	Nameplate
3	9100843	1	Valve	11	6017710	1	Screw
4	60133	1	Disc	12	9959	1	Nut
5	60132	1	Diaphragm	13	See Table	1	Nut
6	60133A	1	Diaphragm disc	14	See Table	1	Stem
7	60185	1	Spring	15	See Table	1	Outlet
8	92643	1	Pivot				

SERVICE NOTES		
ITEM No.	TORQUE SPECIFICATION	SERVICE TOOL OR NOTES
3	25 - 35 Nm	16mm hex socket wrench
9	35 - 55 Nm	26mm hex wrench
11		4mm hex allen wrench
12		13mm hex wrench
14	25 - 35 Nm	Hex allen wrench varies - Use LOCTITE 270
15	18 - 36 Nm	17mm hex wrench - Use LOCTITE 270

IMPORTANT: All repairs or conversions should be carried out by a qualified repairer, with genuine HARRIS parts, to HARRIS repair specifications, and in accordance with local laws or regulations. No contaminant (grease, oil, others) to come in contact with oxygen.