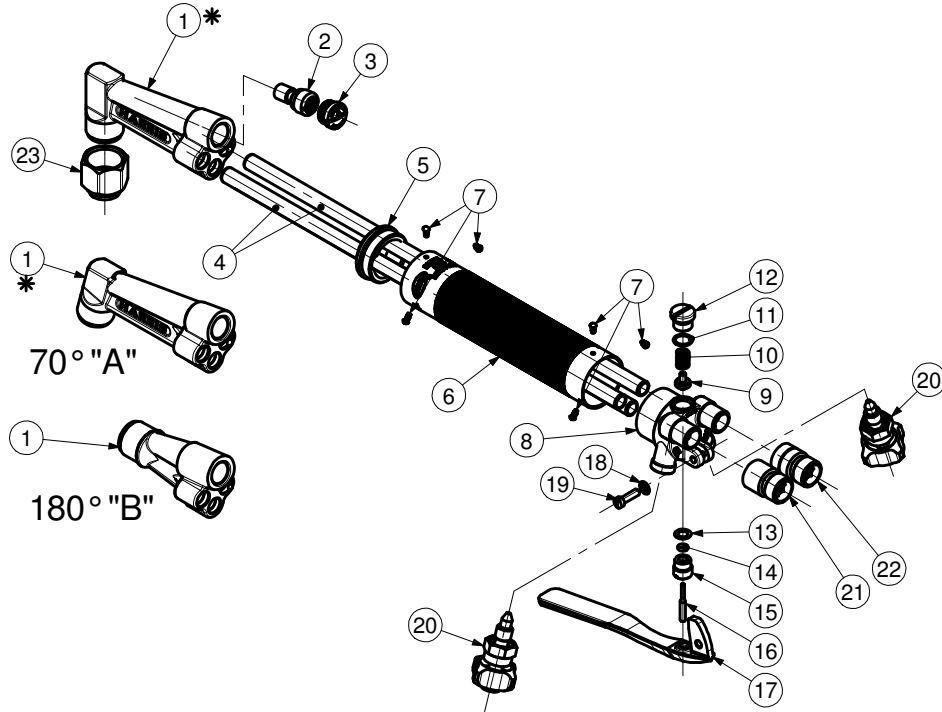


**HARRIS**

**HAND CUTTING TORCH MODEL 62-5F  
UNIVERSAL PRESSURE  
OXY-PROPANE**



Note \* : When the head (1) is replaced, the injector (2) seat must be reset with tool p.n. U6244

ITEM	PART.No.	Qty	DESCRIPTION	ITEM	PART.No.	Qty	DESCRIPTION
1*	See Table	1	Head	13	6239	1	Gasket
2	C62F	1	Injector	14	215X716D	1	O-Ring
3	62193F	1	Cap	15	6277A	1	Screw
4	See Table	3	Tube	16	6266	1	Plunger
5	62195	1	Cap	17	D62B	1	Lever
6	6243B	1	Handle	18	76X96	1	Washer
7	13X61	6	Rivet	19	76772	1	Screw
8	6288A	1	Tail	20	9101150	2	Valve
9	B62A	1	Valve	21	See Table	1	Adaptor
10	62851	1	Spring	22	See Table	1	Adaptor
11	215X715057A	1	O-Ring	23	6259B	1	Nut
12	62192A	1	Cap				

**PART NUMBER/DESCRIPTION**

Item	1*	4	21	22
MODEL No.	HEAD	TUBE	ADAPTOR	ADAPTOR
625F	A6244PS	6292		
625AF	A62442PS	6292		
625BF	62443APS	6292		
625FL	A6244PS	7692		
625AFL	A62442PS	7692		
625BFL	62443APS	7692		
625FGB	A6244PS	6292	382GBR	382GBL
625AFGB	A62442PS	6292	382GBR	382GBL
625BFGB	62443APS	6292	382GBR	382GBL
625FLGB	A6244PS	7692	382GBR	382GBL
625AFLGB	A62442PS	7692	382GBR	382GBL
625BFLGB	62443APS	7692	382GBR	382GBL

**SERVICE NOTES**

ITEM No.	TORQUE SPECIFICATION	SERVICE TOOL OR NOTES
1		62T2A - 7/8"-20-UNEF - Die For Tip Nut Threads
		62T11A - To Regroove Tip Seat
		62T1C - To Reseat Tip Seat
		62T7 - 9/16"-27-UNS-3B - Tap For Injector And Cap Seat Threads
		62T3 - To Reseat Injector Cap Seat
		U6244 - To Reseat Injector Seat
2	81-92 kgcm	Screw Driver
3	81-92 kgcm	Screw Driver
8		12T4 - 7/16"-27-UNS - Tap For Cap And Screw Threads
		62T5 - To Reseat Valve Seat
		62T9 - 9/16"-27-UNS-3A - Die For Needle Valve Threads
		13T2 - 3/8"-24-UNF-3B - Tap For Needle Valve Threads
		76T2 - To Reseat Needle Valve Seat
		52T2R - To Reseat Oxygen Hose Connection
		52T2L - To Reseat Fuel Hose Connection
11-14		Use Molykote M-55
	12	35 kgcm Screw Driver
	15	29 kgcm 62T6 - Screw Driver - Special Slotted Blade
20	125 kgcm	17mm Open end Wrench - Use Molykote M-55
21-22	200 kgcm	8mm Allen Hex Wrench - Use Loctite 275
23		25mm Open end Wrench

**IMPORTANT:** All repairs or conversions should be carried out by a qualified repairer, with genuine HARRIS parts, to HARRIS repair specifications, and in accordance with local laws or regulations. No contaminant (grease, oil, others) to come in contact with oxygen.