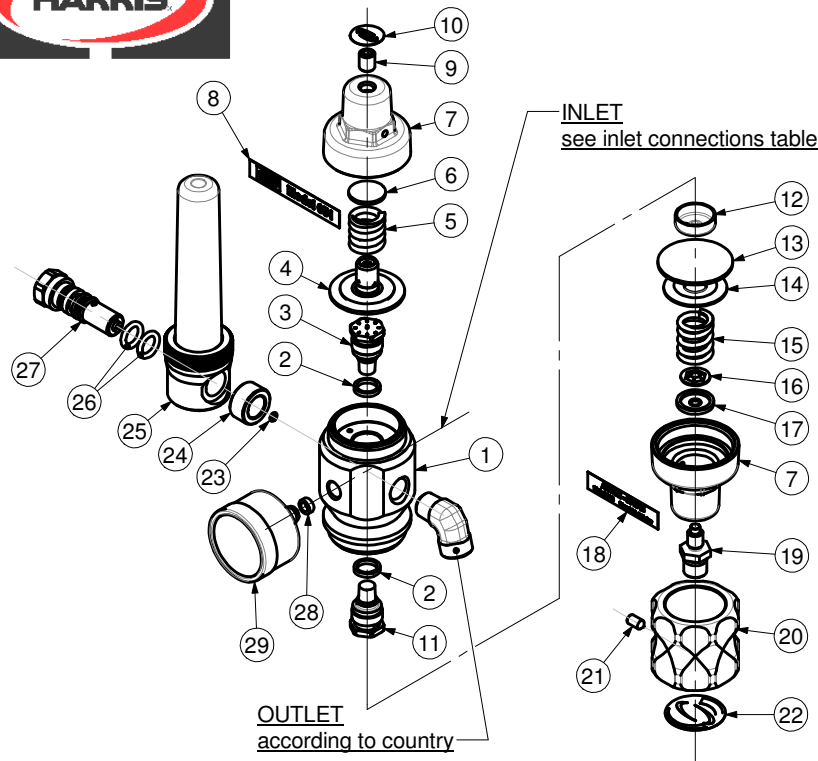


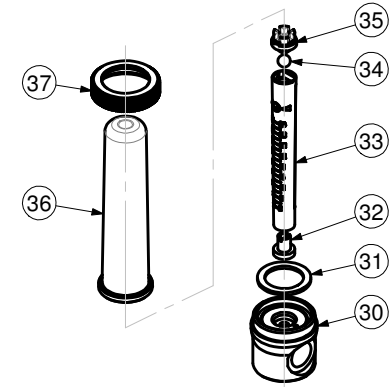


FLOWMETER REGULATORS -MODEL 651



ITEM	PART No.	Qty	DESCRIPTION	ITEM	PART No.	Qty	DESCRIPTION
1	OP110	1	Body	16	101597BB	1	Retaining ring
2	89539	2	Gasket	17	601642	1	Pivot
3	9100841	1	Valve	18	According to model	1	Nameplate
4	D60110	1	Diaphragm type SRV	19	OP177	1	Screw
5	601855	1	Spring	20	OP128	1	Knob
6	92643	1	Pivot	21	GQ1772	1	Screw
7	601112	2	Bonnet	22	65165S2	1	Knob label
8	60165S	1	Nameplate	23	215X715178A	1	O-Ring
9	601772	1	Screw	24	OP1F24	1	Spacer
10	65165S3	1	Label	25	See table	1	Flowmeter
11	9100843	1	Valve	26	215X715614A	2	O-Ring
12	60133	1	Disc	27	OP1F77	1	Screw
13	60132	1	Diaphragm	28	60139	1	Gasket
14	60133A	1	Diaphragm disc	29	8EOP11	1	H.P. Gauge
15	60185	1	Spring				

PART NUMBER / DESCRIPTION		
Item	25	33
MODEL No.	FLOWMETER	FLOW TUBE
65120L	H866OP120L	GQ86662ARC20
65130L	H866OP130L	GQ86662ARC30



FLOWMETER PARTS							
ITEM	PART No.	Qty	DESCRIPTION	ITEM	PART No.	Qty	DESCRIPTION
30	OP1F10	1	Body	34	GQ86603	1	Ball
31	GQ86639	1	Gasket	35	GQ86660	1	Bumper
32	GQ86678	1	Seal	36	GQ86629	1	Cover
33	See Table	1	Flow tube	37	GQ86659	1	Nut

SERVICE NOTES		
ITEM No.	TORQUE SPECIFICATION	SERVICE TOOL OR NOTES
3	25 - 35 Nm	16mm hex socket wrench
7	35 - 55 Nm	26mm hex wrench
9		4mm hex allen wrench
11	25 - 35 Nm	16mm hex socket wrench
19		Lube with Fomblin RT 15 or Krytox GPL 226 grease
21		2,5mm hex allen wrench
23 - 26		Use Molykote M-55
27	12 - 20 Nm	18mm hex wrench
28		To remove nylon gasket unscrew the gasket with a flat screwdriver
29	7 - 30 Nm	14mm open end wrench
Outlet	35 - 60 Nm	14mm open end wrench - Use PTFE tape
Inlet	30 - 50 Nm	Wrench hex varies - Dry joint

IMPORTANT: All repairs or conversions should be carried out by a qualified repairer, with genuine HARRIS parts, to HARRIS repair specifications, and in accordance with local laws or regulations. No contaminant (grease, oil, others) to come in contact with oxygen.