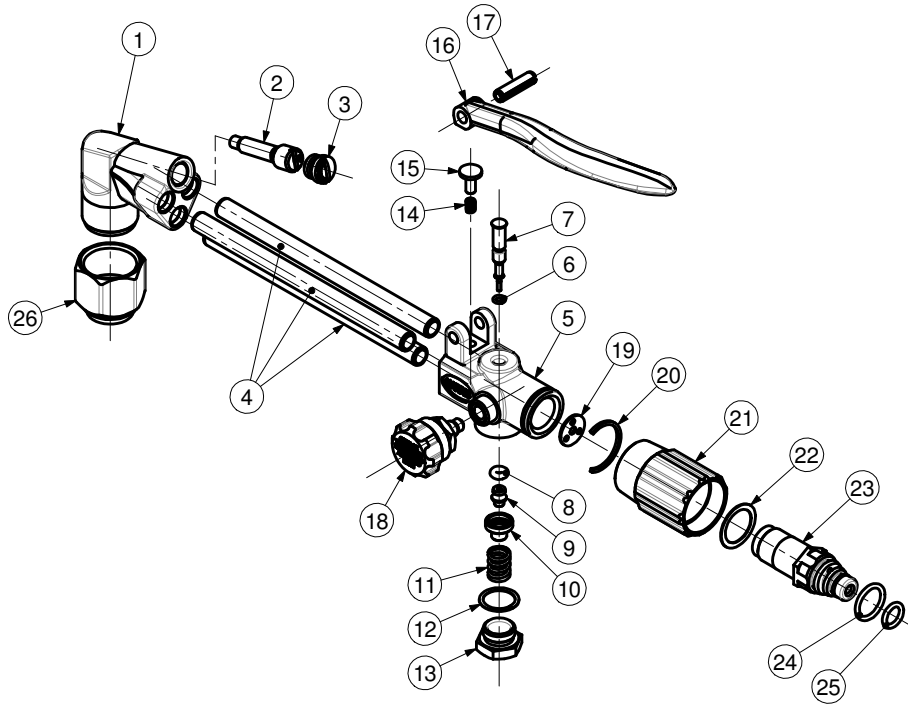




CUTTING ATTACHMENT
EQUAL PRESSURE
-MODEL 733



ITEM	PART No.	Qty	DESCRIPTION	ITEM	PART No.	Qty	DESCRIPTION
1	7244PS	1	Head	14	7985	1	Spring
2	7255	1	Mixer	15	7316	1	Button
3	7219	1	Cap	16	7253	1	Lever
4	7992B	3	Tube	17	7361	1	Roof Pin
5	7310	1	Body	18	D42PS	1	Valve
6	215X715178A	1	O-Ring	19	7939	1	Gasket
7	9003145	1	Plunger	20	7371	1	Retaining Ring
8	9003144	1	O-Ring	21	7359PS	1	Nut
9	9003143	1	Valve	22	7296	1	Washer
10	9003142	1	Disc	23	73862	1	Stem
11	7385	1	Spring	24	215X7114A	1	O-Ring
12	7339	1	Gasket	25	215X7111A	1	O-Ring
13	7319	1	Plug	26	6259B	1	Nut

SERVICE NOTES

ITEM No.	TORQUE SPECIFICATION	SERVICE TOOL OR NOTES
1		62T2A - 7/8"-20-UNEF - Die for tip nut threads
		62T11A - To regroove tip seat
		62T1C - To reseal tip seat
		13T4 - 3/8"-27-UNS-3B-RH - Tap for mixer and cap seat threads
		72T2 - To reseal mixer cap seat 72T1 - To reseal mixer seat
2	5 Nm	Screw driver
3	7 Nm	Screw driver
5		RT725 - .560"-36-UNS-3B-RH - Tap for body inlet threads
		53T3 - 1/4"-32-UNEF-3B-RH - Tap for needle valve threads
		53T1 - To reseal needle valve seat
		12T6 - 7/16"-27-UNS-3A-RH - Die for needle valve threads
		T7310 - To reseal H.P. valve seat
		56T6 - 1/2"-27-UNS-3B-RH - Tap for cap valve threads
6 - 8		Use Molykote M-55
13	9-11 Nm	16mm open end wrench
18	6 Nm	14mm open end wrench - Use Molykote M-55
23	27 Nm	72T4 - To remove and fit connector stem
26		25mm open end wrench

IMPORTANT: All repairs or conversions should be carried out by a qualified repairer, with genuine HARRIS parts, to HARRIS repair specifications, and in accordance with local laws or regulations. No contaminant (grease, oil, others) to come in contact with oxygen.