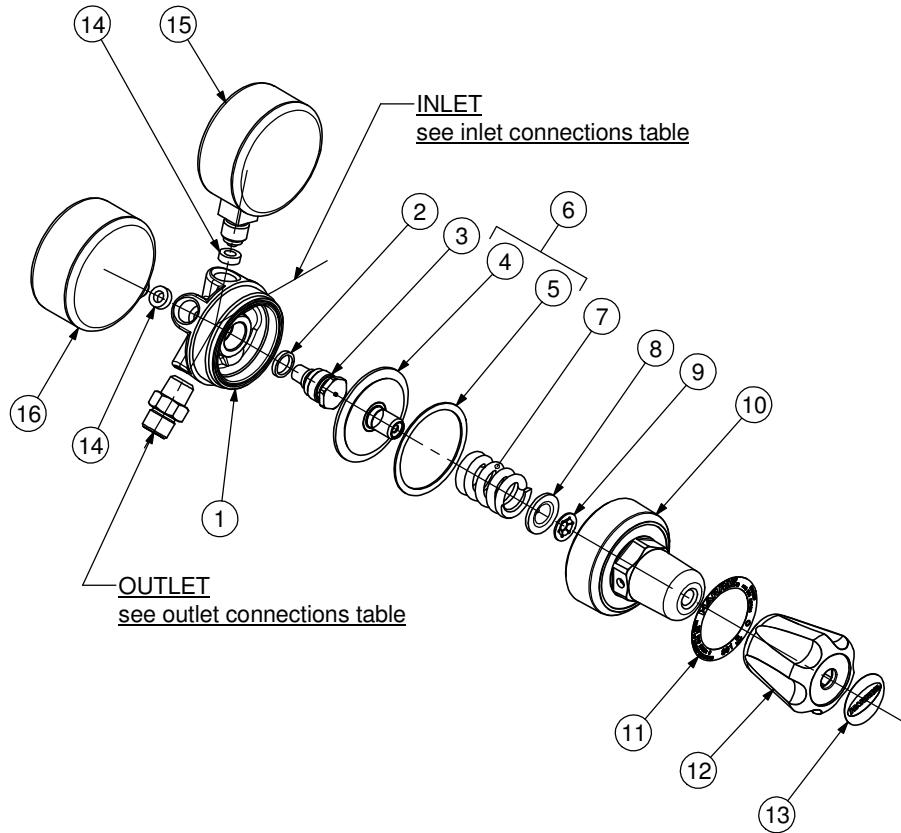


**PRESSURE REGULATOR
MODEL 801DB
801DB-L**



ITEM	PART.No.	Qty	DESCRIPTION	ITEM	PART.No.	Qty	DESCRIPTION
1	8011040	1	Body	9	101597BB	1	Retaining Ring
2	89539	1	Gasket	10	801114	1	Bonnet
3	See Table	1	Valve	11	According To Country	1	Nameplate
4	See Table	1	Diaphragm-Type SRV	12	801283	1	Knob
5	80171	1	Slip Ring	13	According To Country	1	Knob Disc
6	See Table	1	Diaphragm-Type SRV	14	84139A	2	Gasket
7	See Table	1	Spring	15	See Table	1	H.P. Gauge
8	10164	1	Pivot	16	See Table	1	L.P. Gauge

PART NUMBER/DESCRIPTION

Item	3	4	6	7	15	16
MODEL No.	VALVE	DIAPHRAGM-Type SRV	DIAPHRAGM-Type SRV	SPRING	H.P. GAUGE	L.P. GAUGE
801DB4OX	9100845	D8014	D8014PS	801852	8E615OXBP	8E661OXBP
801DB4	9100845	D8014	D8014PS	801852	8E615BP	8E661BP
801DB10OX	9100845	D80110	D80110PS	801854	8E615OXBP	8E619OXBP
801DB10	9100845	D80110	D80110PS	801854	8E615BP	8E619BP
801DB15L	9100843	D8014	D8014PS	801852	8E615BP	8E6001BP
801DB30L	9100843	D8014	D8014PS	801852	8E615BP	8E6003BP
801DB50L	9100843	D8014	D8014PS	801852	8E615BP	8E6002BP

SERVICE NOTES

ITEM No.	TORQUE SPECIFICATION	SERVICE TOOL OR NOTES
ASSEMBLY COMPLETE		101T1C - Holding Fixture-Secure in Vice and Locate Assembly in Fixture
3	250-300 kgcm	16mm Hex Socket Wrench
10	480-550 kgcm	30mm Hex Wrench
12		Lube With Fomblin RT 15 or Krytox GPL 226 Grease
14		To Remove Nylon Gasket Unscrew the Gasket With a Flat Screwdriver To Remove Aluminium Gasket Use Tool RT84139
15-16	300-330 kgcm	14mm Open End Wrench
OUTLET	360-400 kgcm	Wrench Hex Varies - Use P.T.F.E. Tape
INLET	490-540 kgcm	Wrench Hex Varies - Dry Joint

IMPORTANT: All repairs or conversions should be carried out by a qualified repairer, with genuine HARRIS parts, to HARRIS repair specifications, and in accordance with local laws or regulations. No contaminant (grease, oil, others) to come in contact with oxygen.