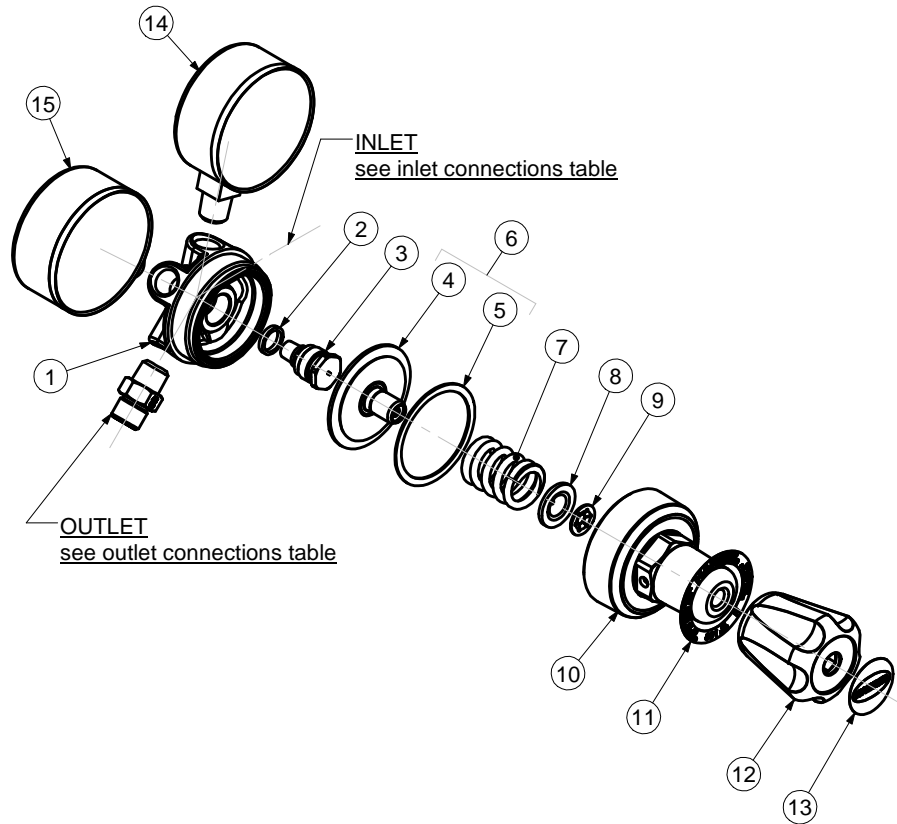




FLOWGAUGE REGULATORS
 -MODEL 801D-L
 -MODEL 801DB-L



ITEM	PART No.	QTY	DESCRIPTION	ITEM	PART No.	QTY	DESCRIPTION
1	80110123	1	Body	9	101597BB	1	Retaining ring
2	89539	1	Gasket	10	See Table	1	Bonnet
3	9100843	1	Valve	11	According to country	1	Nameplate
4	D8014	1	Diaphragm Type SRV	12	801283	1	Knob
5	80171	1	Slip ring	13	According to country	1	Knob label
6	D8014PS	1	Diaphragm Type SRV	14	See Table	1	H.P. Gauge
7	801852	1	Spring	15	See Table	1	L.P. Gauge
8	10164	1	Pivot				

PART NUMBER / DESCRIPTION			
Item	10	14	15
MODEL No.	BONNET	H.P. GAUGE	L.P. GAUGE
801D15L	801112	8G615	8G6001
801D30L	801112	8G615	8G6003
801D50L	801112	8G615	8G6002
801D15LK	801112	8G615K	8G6001
801D30LK	801112	8G615K	8G6003
801D50LK	801112	8G615K	8G6002
801DB15L	801114	8G615BP	8G6001BP
801DB30L	801114	8G615BP	8G6003BP
801DB50L	801114	8G615BP	8G6002BP

SERVICE NOTES		
ITEM No.	TORQUE SPECIFICATION	SERVICE TOOL OR NOTES
Assembly Complete		101-T-1C - Holding fixture-secure in vice and locate assembly in fixture
3	25 - 35 Nm	16mm hex socket wrench
10	48 - 70 Nm	30mm hex wrench
12		Lube with Fomblin RT 15 or Krytox GPL 226 Grease
14 - 15	20 - 22 Nm	14mm open end wrench - Use PTFE tape
Outlet	35 - 60 Nm	Wrench hex varies - Use PTFE tape
Inlet	35 - 60 Nm	Wrench hex varies - Dry joint
IMPORTANT: All repairs or conversions should be carried out by a qualified repairer, with genuine HARRIS parts, to HARRIS repair specifications, and in accordance with local laws or regulations. No contaminant (grease, oil, others) to come in contact with oxygen.		