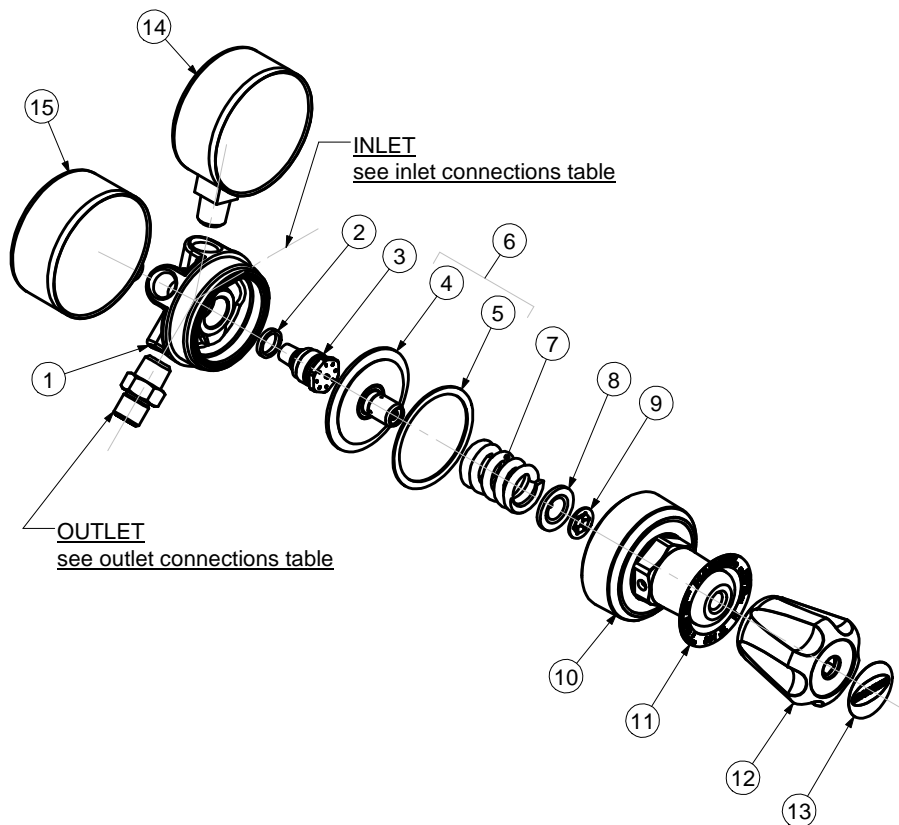




**SINGLE STAGE REGULATORS**  
**-MODEL 801D**  
**-MODEL 801DB**



ITEM	PART No.	QTY	DESCRIPTION	ITEM	PART No.	QTY	DESCRIPTION
1	80110123	1	Body	9	101597BB	1	Retaining ring
2	89539	1	Gasket	10	See Table	1	Bonnet
3	9100845	1	Valve	11	According to country	1	Nameplate
4	See Table	1	Diaphragm Type SRV	12	801283	1	Knob
5	80171	1	Slip ring	13	According to country	1	Knob label
6	See Table	1	Diaphragm Type SRV	14	See Table	1	H.P. Gauge
7	See Table	1	Spring	15	See Table	1	L.P. Gauge
8	10164	1	Pivot				

Item	PART NUMBER / DESCRIPTION					
	4	6	7	10	14	15
MODEL No.	DIAPHRAGM Type SRV	DIAPHRAGM Type SRV	SPRING	BONNET	H.P. GAUGE	L.P. GAUGE
801D4OX	D8014	D8014PS	801852	801112	8G615OX	8G661OX
801D4	D8014	D8014PS	801852	801112	8G615	8G661
801D10OX	D80110	D80110PS	801854	801112	8G615OX	8G619OX
801D10	D80110	D80110PS	801854	801112	8G615	8G619
801D400OX	D8014	D8014PS	801852	801112	8G615KOX	8G661KOX
801D400	D8014	D8014PS	801852	801112	8G615K	8G661K
801D1000OX	D80110	D80110PS	801854	801112	8G615KOX	8G619KOX
801D1000	D80110	D80110PS	801854	801112	8G615K	8G619K
801DB4OX	D8014	D8014PS	801852	801114	8G615OXBP	8G661OXBP
801DB4	D8014	D8014PS	801852	801114	8G615BP	8G661BP
801DB10OX	D80110	D80110PS	801854	801114	8G615OXBP	8G619OXBP
801DB10	D80110	D80110PS	801854	801114	8G615BP	8G619BP

SERVICE NOTES		
ITEM No.	TORQUE SPECIFICATION	SERVICE TOOL OR NOTES
Assembly Complete		<b>101-T-1C</b> - Holding fixture-secure in vice and locate assembly in fixture
3	25 - 35 Nm	16mm hex socket wrench
10	48 - 70 Nm	30mm hex wrench
12		Lube with Fomblin RT 15 or Krytox GPL 226 Grease
14 - 15	20 - 22 Nm	14mm open end wrench - Use PTFE tape
Outlet	35 - 60 Nm	Wrench hex varies - Use PTFE tape
Inlet	35 - 60 Nm	Wrench hex varies - Dry joint
<b>IMPORTANT:</b>	All repairs or conversions should be carried out by a qualified repairer, with genuine HARRIS parts, to HARRIS repair specifications, and in accordance with local laws or regulations. No contaminant (grease, oil, others) to come in contact with oxygen.	