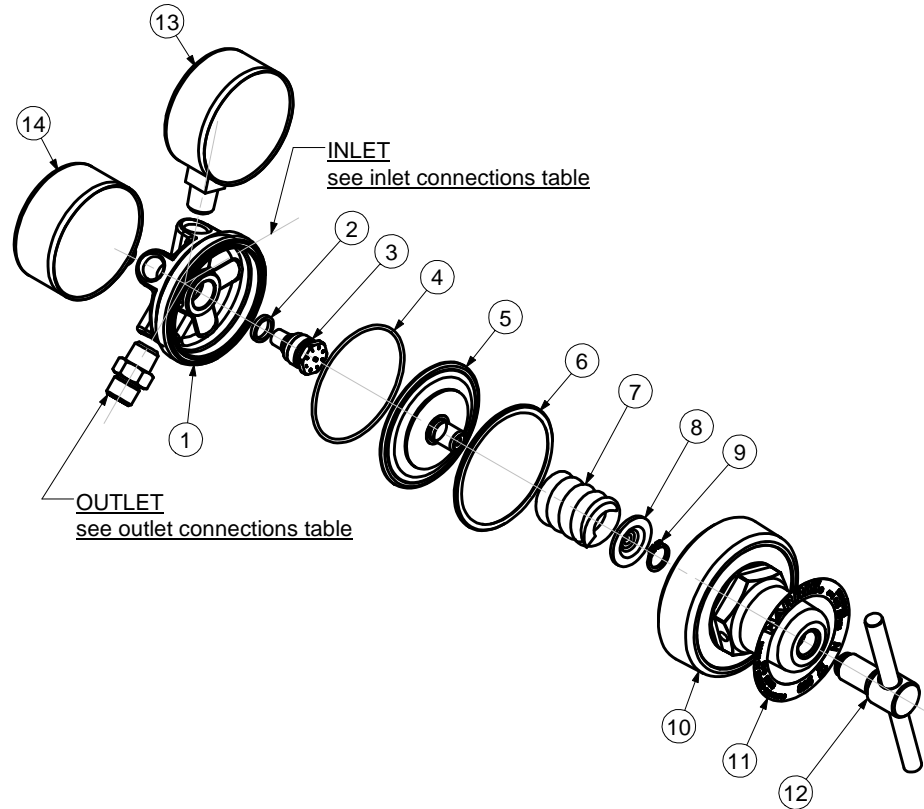




**SINGLE STAGE
PRESSURE REGULATORS
-MODEL 825DS**



ITEM	PART No.	QTY	DESCRIPTION	ITEM	PART No.	QTY	DESCRIPTION
1	8251072	1	Body	8	5664A	1	Pivot
2	89539	1	Gasket	9	825X71	1	Retaining ring
3	9100845	1	Valve	10	J25A	1	Bonnet
4	215X712036A	1	O-Ring	11	According to country	1	Nameplate
5	See Table	1	Diaphragm-type SRV	12	C825	1	T-Screw
6	9004771	1	Ring	13	See Table	1	H.P. Gauge
7	See Table	1	Spring	14	See Table	1	L.P. Gauge

PART NUMBER / DESCRIPTION				
Item	5	7	13	14
MODEL No.	DIAPHRAGM	SPRING	H.P. GAUGE	L.P. GAUGE
825DS15OX	D82515S	9485	8G615OX	8G6411OX
825DS15	D82515S	9485	8G615	8G6411
825DS20OX	D82525	258542	8G615OX	8G617S
825DS20	D82525	258542	8G615	8G617S
825DS25OX	D82525	258542	8G615OX	8G617
825DS25	D82525	258542	8G615	8G617
825DS1500OX	D82515S	9485	8G615KOX	8G6411KOX
825DS1500	D82515S	9485	8G615K	8G6411K
825DS2500OX	D82525	258542	8G615KOX	8G617K
825DS2500	D82525	258542	8G615K	8G617K

SERVICE NOTES		
ITEM No.	TORQUE SPECIFICATION	SERVICE TOOL OR NOTES
Assembly Complete		25T1C - Holding fixture-secure in vice and locate assembly in fixture
3	25 - 35 Nm	16mm hex socket wrench
10	48 - 70 Nm	1" 5/8 inch hex wrench
12		Lube with Fomblin RT 15 or Krytox GPL 226 Grease
13 - 14	20 - 22 Nm	14mm open end wrench - Use PTFE tape
Outlet	35 - 60 Nm	Wrench hex varies - Use LOCTITE 270
Inlet	35 - 60 Nm	Wrench hex varies - Use LOCTITE 270
IMPORTANT: All repairs or conversions should be carried out by a qualified repairer, with genuine HARRIS parts, to HARRIS repair specifications, and in accordance with local laws or regulations. No contaminant (grease, oil, others) to come in contact with oxygen.		