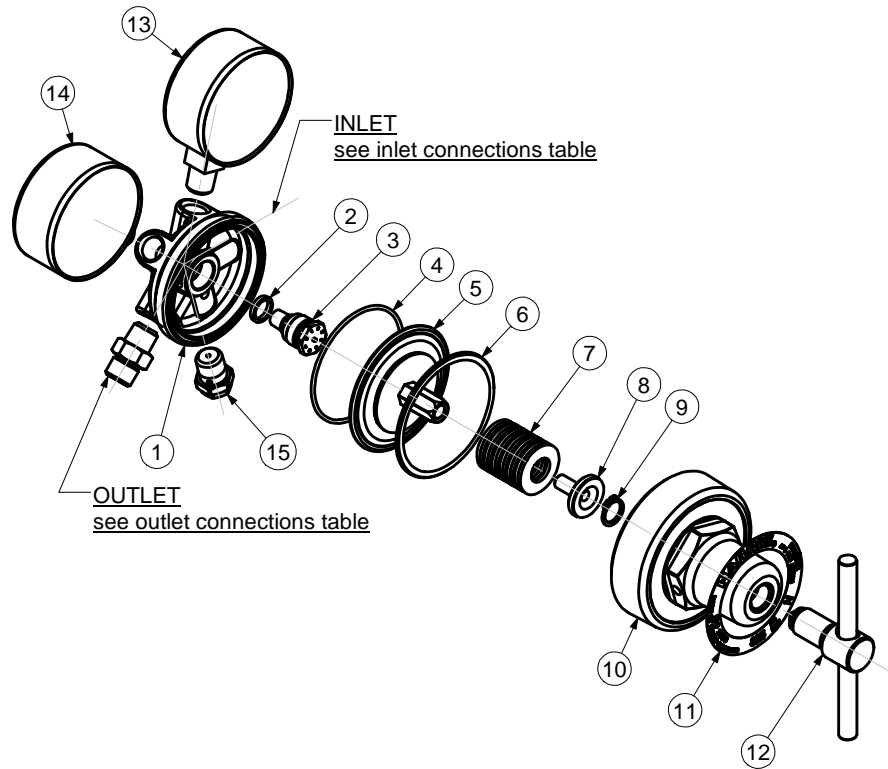




**SINGLE STAGE  
PRESSURE REGULATORS  
-MODEL 825ARS**



ITEM	PART No.	QTY	DESCRIPTION	ITEM	PART No.	QTY	DESCRIPTION
1	8251062	1	Body	9	825X71	1	Retaining ring
2	89539	1	Gasket	10	J25A	1	Bonnet
3	9100845	1	Valve	11	According to country	1	Nameplate
4	215X712036A	1	O-Ring	12	C825	1	Screw
5	B253A	1	Diaphragm assy	13	See Table	1	H.P. Gauge
6	9004771	1	Ring	14	See Table	1	H.P. Gauge
7	87852PK	1	Spring	15	882	1	Safety valve
8	92642A	1	Pivot				

PART NUMBER / DESCRIPTION		
Item	13	14
MODEL No.	H.P. GAUGE	L.P. GAUGE
825ARS400X	8G615OX	8G6620OX
825ARS40	8G615	8G6620
825ARS500X	8G615OX	8G623
825ARS50	8G615	8G623
825ARS4000OX	8G615KOX	8G6620K
825ARS4000	8G615K	8G6620K

SERVICE NOTES		
ITEM No.	TORQUE SPECIFICATION	SERVICE TOOL OR NOTES
Assembly Complete		<b>25T1C</b> - Holding fixture-secure in vice and locate assembly in fixture
3	25 - 35 Nm	16mm hex socket wrench
10	48 - 70 Nm	1" 5/8 inch hex wrench
12		Lube with Fomblin RT 15 or Krytox GPL 226 Grease
13 - 14	20 - 22 Nm	14mm open end wrench - Use PTFE tape
15	13 - 22 Nm	17mm open end wrench - Use PTFE tape
Outlet	35 - 60 Nm	Wrench hex varies - Use LOCTITE 270
Inlet	35 - 60 Nm	Wrench hex varies - Use LOCTITE 270
<b>IMPORTANT:</b> All repairs or conversions should be carried out by a qualified repairer, with genuine HARRIS parts, to HARRIS repair specifications, and in accordance with local laws or regulations. No contaminant (grease, oil, others) to come in contact with oxygen.		