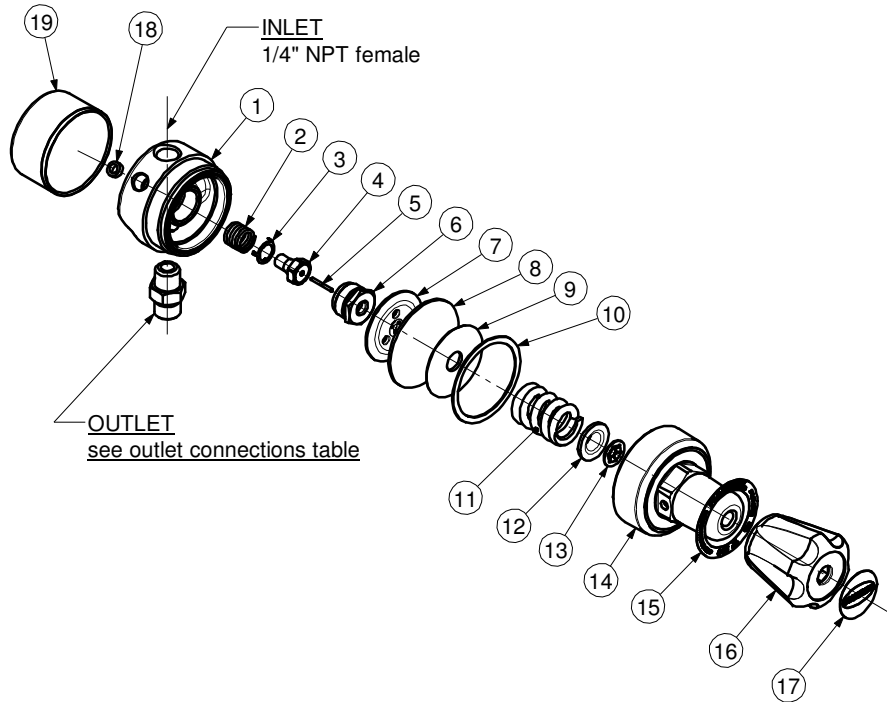




PIPELINE REGULATORS
-MODEL 845

PART NUMBER / DESCRIPTION		
Item	11	19
MODEL No.	SPRING	L.P. GAUGE
8451,5AC	80185	8E6013AC
8454LP	801852	8E6015
845100X	801854	8E6016OX
84510	801854	8E6016
84515L	801852	8E60173,5
84530L	801852	8E60123,5
84550L	801852	8E60183,5



ITEM	PART No.	Qty	DESCRIPTION	ITEM	PART No.	Qty	DESCRIPTION
1	84510	1	Body	11	See Table	1	Spring
2	92853	1	Spring	12	10164	1	Pivot
3	92963	1	Antivibrator	13	101597BB	1	Retaining ring
4	A92	1	Valve	14	801112	1	Bonnet
5	9266	1	Pin	15	According to country	1	Namepalte
6	84758	1	Nozzle	16	801283	1	Knob
7	80133	1	Disc	17	According to country	1	Knob label
8	80132	1	Diaphragm	18	60139	1	Gasket
9	80133A	1	Diaphragm disc	19	See Table	1	L.P. Gauge
10	80171	1	Slip ring				

SERVICE NOTES		
ITEM No.	TORQUE SPECIFICATION	SERVICE TOOL OR NOTES
Assembly Complete		101T1C - Holding fixture-secure in vice and locate assembly in fixture
6	65 - 85 Nm	19mm hex socket wrench
14	48 - 70 Nm	30mm hex wrench
16		Lube with Fomblin RT 15 or Krytox GPL 226 Grease
19	7 - 30 Nm	14mm open end wrench
Outlet	35 - 60 Nm	Wrench hex varies - Use LOCTITE 270
Inlet	35 - 60 Nm	Wrench hex varies - Use LOCTITE 270

IMPORTANT: All repairs or conversions should be carried out by a qualified repairer, with genuine HARRIS parts, to HARRIS repair specifications, and in accordance with local laws or regulations. No contaminant (grease, oil, others) to come in contact with oxygen.