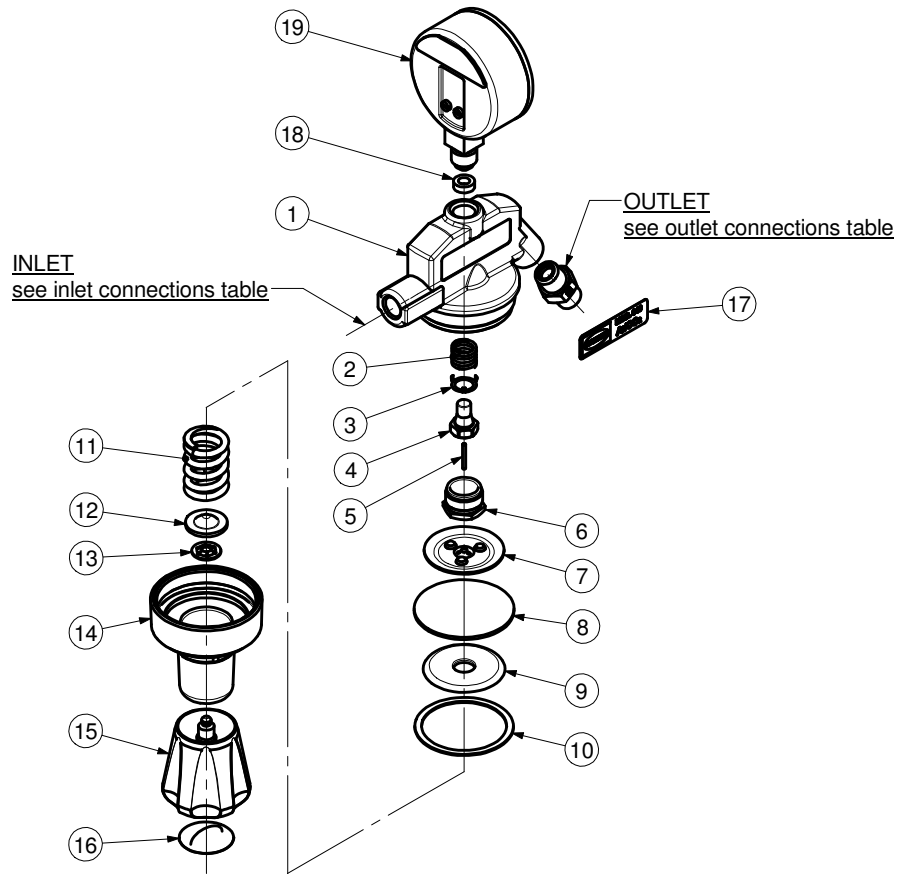


HARRIS

**PRESSURE REGULATOR
MODEL 846
846-L**



ITEM	PART No.	Qty	DESCRIPTION	ITEM	PART.No.	Qty	DESCRIPTION
1	84610	1	Body	11	See Table	1	Spring
2	92853	1	Spring	12	10164	1	Pivot
3	92963	1	Antivibrator	13	101597BB	1	Retaining Ring
4	A92	1	Valve Seat	14	841112	1	Bonnet
5	9266	1	Plunger	15	801283	1	Knob
6	84758	1	Nozzle	16	According To Country	1	Knob Disc
7	80133PS	1	Disc	17	According To Country	1	Nameplate
8	80132PS	1	Diaphragm	18	84139A	1	Gasket
9	80133APS	1	Diaphragm Disc	19	See Table	1	L.P. Gauge
10	80171	1	Slip Ring				

PART NUMBER/DESCRIPTION

Item	11	19
MODEL No.	SPRING	L.P. GAUGE
8461,5AC	80185	8E686AC
8464OX	801852	8E661OX
8464	801852	8E661
84610OX	801854	8E619OX
84610	801854	8E619
84615L	801852	8E6001
84630L	801852	8E6003
84650L	801852	8E6002

SERVICE NOTES

ITEM No.	TORQUE SPECIFICATION	SERVICE TOOL OR NOTES
6	550-700 kgcm	19mm Hex Socket Wrench
14	480-550 kgcm	30mm Hex Wrench
15		Lube With Fomblin RT 15 or Krytox GPL 226 Grease
18		To Remove Nylon Gasket Unscrew the Gasket With a Flat Screwdriver To Remove Aluminium Gasket Use Tool RT84139
19	300-330 kgcm	14mm Open End Wrench RT8E63 - "Euro" Gauge Lens Remover
OUTLET	360-400 kgcm	Wrench Hex Varies - Use P.T.F.E. Tape
INLET	490-540 kgcm	Wrench Hex Varies - Dry Joint

IMPORTANT: All repairs or conversions should be carried out by a qualified repairer, with genuine HARRIS parts, to HARRIS repair specifications, and in accordance with local laws or regulations. No contaminant (grease, oil, others) to come in contact with oxygen.