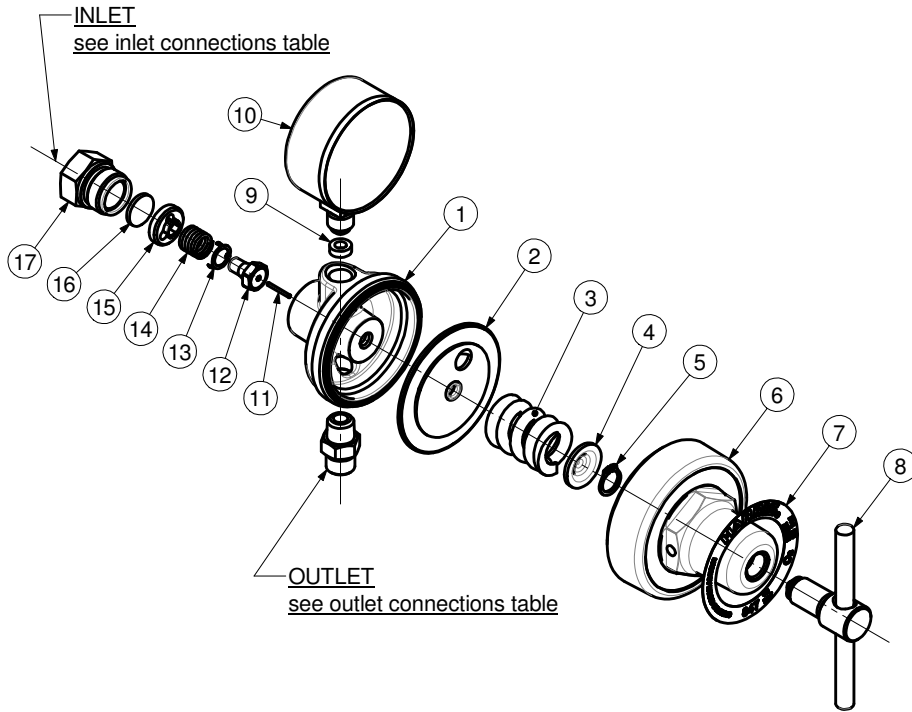




PIPELINE REGULATORS
 -MODEL 84715
 -MODEL 847N15 (1/4"NPT gauge)

PART NUMBER / DESCRIPTION			
Item	1	9	10
MODEL No.	BODY	GAUGE	L.P. GAUGE
84715	847101	84139A	8E6411
84715OX	847101	84139A	8E6411OX
8471500	847101	84139A	8E6411K
8471500OX	847101	84139A	8E6411KOX
847N15OX	847102		8A6411OX



ITEM	PART No.	Qty	DESCRIPTION	ITEM	PART No.	Qty	DESCRIPTION
1	See Table	1	Body	10	See Table	1	L.P. Gauge
2	9100803	1	Diaphragm	11	9266	1	Plunger
3	9485	1	Spring	12	A92	1	Valve seat
4	5664A	1	Pivot	13	92963	1	Antivibrator
5	825X71	1	Retaining ring	14	92853	1	Spring
6	J25A	1	Bonnet	15	84724	1	Bushing
7	According to country	1	Nameplate	16	84738	1	Filter
8	C825	1	Screw	17	84759	1	Nut
9	See Table	1	Gasket				

SERVICE NOTES

MODEL No.	TORQUE SPECIFICATION	SERVICE TOOL OR NOTES
Assembly Complete		25T1C - Holding fixture-secure in vice and locate assembly in fixture
6	48 - 70 Nm	1" 5/8 inch hex wrench
8		Lube with Fomblin RT 15 or Krytox GPL 226 Grease
9		To remove nylon gasket unscrew the gasket with a flat screwdriver To remove aluminium gasket use tool RT84139
10	30 - 32 Nm	14mm open end wrench (8E gauge)
	20 - 22 Nm	14mm open end wrench - Use PTFE tape (8A gauge) RT8E63 - "Euro" gauge lens remover - (Uses on old models)
17	80 - 120 Nm	25mm open end wrench
Outlet	35 - 60 Nm	Wrench hex varies - Use PTFE tape
Inlet	35 - 60 Nm	Wrench hex varies - Use PTFE tape

IMPORTANT: All repairs or conversions should be carried out by a qualified repairer, with genuine HARRIS parts, to HARRIS repair specifications, and in accordance with local laws or regulations. No contaminant (grease, oil, others) to come in contact with oxygen.