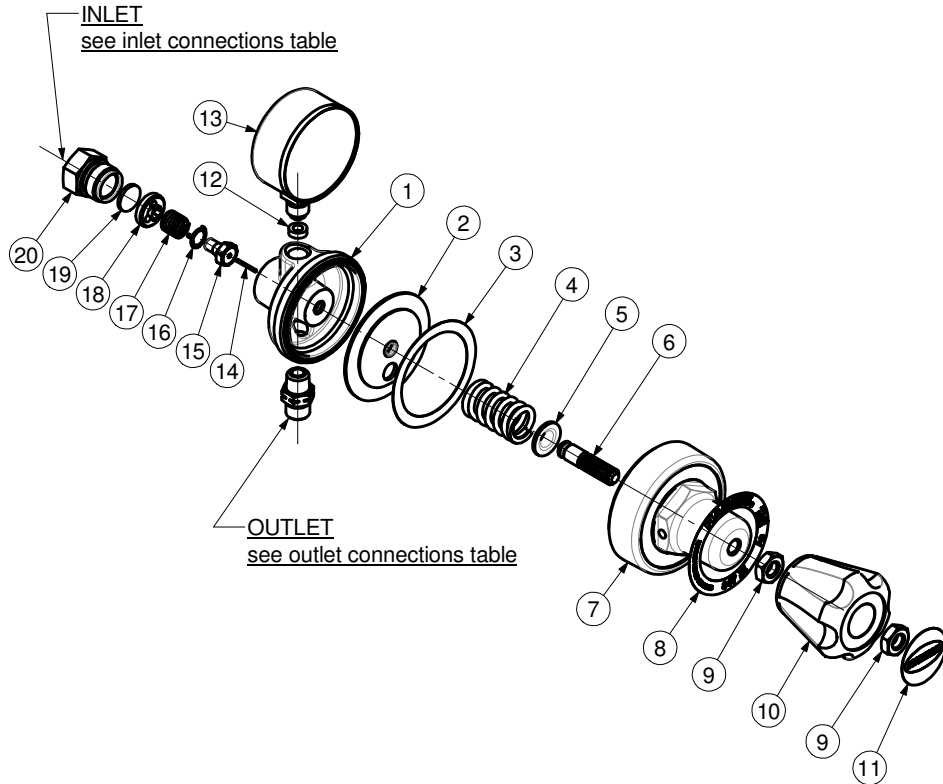




PIPELINE REGULATORS
 -MODEL 847
 -MODEL 847N (1/4"NPT gauge)
 -MODEL 847-L (Flowgauge)



ITEM	PART No.	Qty	DESCRIPTION	ITEM	PART No.	Qty	DESCRIPTION
1	See Table	1	Body	11	According to country	1	Knob label
2	See Table	1	Diaphragm	12	See Table	1	Gasket
3	See Table	1	Slip ring	13	See Table	1	L.P. Gauge
4	See Table	1	Spring	14	9266	1	Plunger
5	10164	1	Pivot	15	A92	1	Valve seat
6	80177	1	Adjust screw	16	92963	1	Antivibrator
7	82511	1	Bonnet	17	92853	1	Spring
8	According to country	1	Nameplate	18	84724	1	Bushing
9	80159	2	Nut	19	84738	1	Filter
10	82528	1	Knob	20	84759	1	Nut

PART NUMBER / DESCRIPTION						
Item	1	2	3	4	12	13
MODEL No.	BODY	DIAPHRAGM	SLIP RING	SPRING	GASKET	L.P. GAUGE
8471,5AC	847101	9100146	2571	44854	84139A	8E686AC
8471,5LP	847101	9100146	2571	44854	84139A	8E686
8474	847101	9100146	2571	2985	84139A	8E661
8474OX	847101	9100146	2571	2985	84139A	8E661OX
84710	847101	9100803		X92856	84139A	8E619
84710OX	847101	9100803		X92856	84139A	8E619OX
847150AC	847101	9100146	2571	44854	84139A	8E686KAC
847150LP	847101	9100146	2571	44854	84139A	8E686K
847400	847101	9100146	2571	2985	84139A	8E661K
847400OX	847101	9100146	2571	2985	84139A	8E661KOX
8471000	847101	9100803		X92856	84139A	8E619K
8471000OX	847101	9100803		X92856	84139A	8E619KOX
84715L	847101	9100146	2571	2985	84139A	8E6001
84730L	847101	9100146	2571	2985	84139A	8E6003
84750L	847101	9100146	2571	2985	84139A	8E6002
847N1,5AC	847102	9100146	2571	44854		8A686AC
847N10OX	847102	9100803		X92856		8A619OX

SERVICE NOTES

MODEL No.	TORQUE SPECIFICATION	SERVICE TOOL OR NOTES
Assembly Complete		25T1C - Holding fixture-secure in vice and locate assembly in fixture
6		Lube with Fomblin RT 15 or Krytox GPL 226 Grease
7	48 - 70 Nm	1" 5/8 inch hex wrench
9	8 - 12 Nm	RT8001 - Special socket wrench
12		To remove nylon gasket unscrew the gasket with a flat screwdriver
		To remove aluminium gasket use tool RT84139
13	30 - 32 Nm	14mm open end wrench (8E gauge)
	20 - 22 Nm	14mm open end wrench - Use PTFE tape (8A gauge) RT8E63 - "Euro" gauge lens remover - (Uses on old models)
20	80 - 120 Nm	25mm open end wrench
Outlet	35 - 60 Nm	Wrench hex varies - Use PTFE tape
Inlet	35 - 60 Nm	Wrench hex varies - Use PTFE tape

IMPORTANT: All repairs or conversions should be carried out by a qualified repairer, with genuine HARRIS parts, to HARRIS repair specifications, and in accordance with local laws or regulations. No contaminant (grease, oil, others) to come in contact with oxygen.