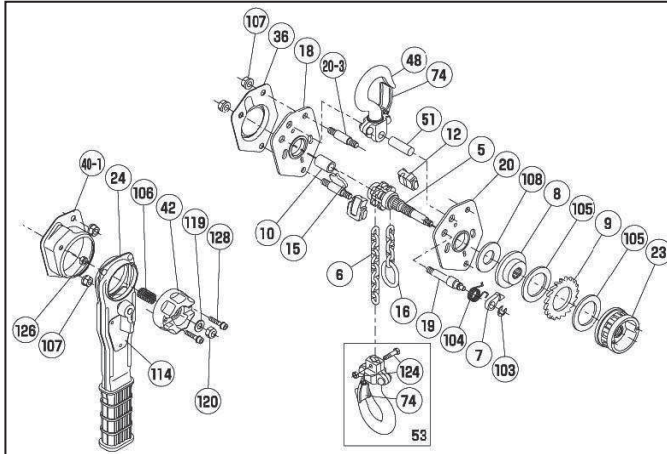


Spare Parts Svero Lever Block 15B



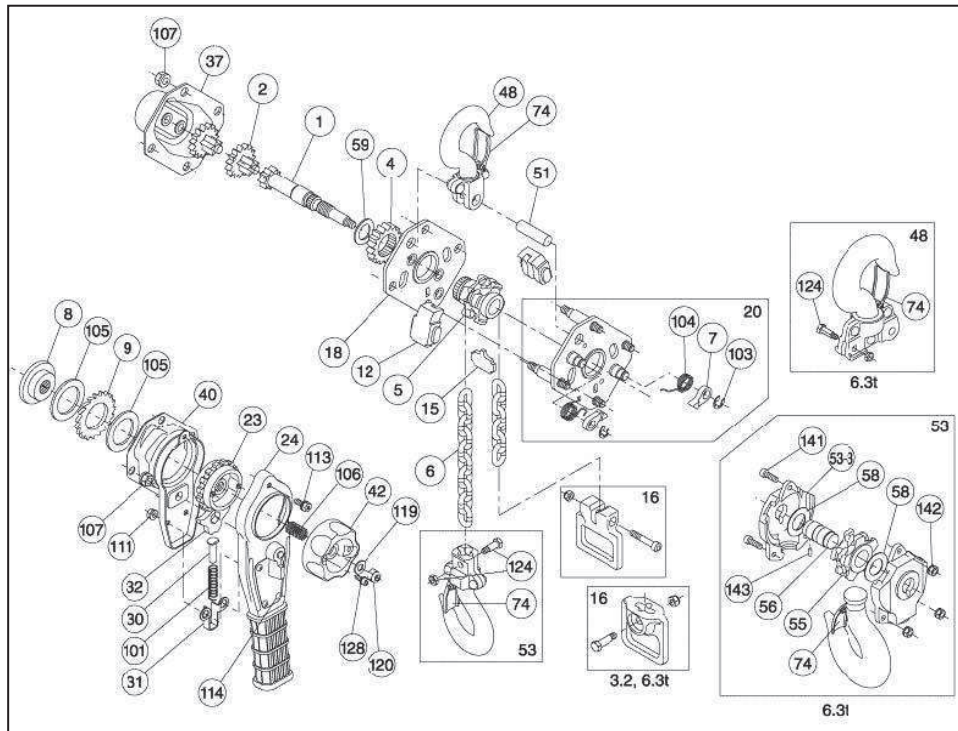
When ordering spare parts specify model, WLL, part number and the quantity needed.

0,5 t Lever block 15B – exploded view

Spare parts list 0,5 t Lever block

| Pos. | Description | Qty. | 0.5 t | Pos. | Description | Qty. | 0.5 t |
|------|----------------|------|------------|------|--------------------|------|----------|
| 5 | Chain sheave | 1 | 1512B005 | 42 | Brake wheel | 1 | 1512B042 |
| *6 | Load chain | 1 | 9020116 | 48 | Top hook assembl | 1 | 1512B048 |
| 7 | Pawl | 1 | 1512B007 | 51 | Yoke pin | 1 | 1512B051 |
| 8 | Disc hub | 1 | 1512B008 | 53 | Bottom hook asbly | 1 | 1512B053 |
| 9 | Ratchet wheel | 1 | 1512B009 | 74 | Safety latch asbly | 2 | 1512B074 |
| 10 | Stay pipe | 1 | 1512B010 | 103 | Lock ring E-type | 1 | 1512B103 |
| 12 | Chain guide | 2 | 1512B012 | 104 | Pawl spring | 1 | 1512B104 |
| 15 | Stripper | 1 | 1512B015 | 105 | Brake disc | 2 | 1512B105 |
| 16 | Stop grip | 1 | 1512B0062 | 106 | Spring | 1 | 1512B106 |
| 18 | Plate assembly | 1 | 1512B018 | 107 | Spring nut | 5 | M8 |
| 19 | Pawl bolt | 1 | 1512B019 | 108 | Coned disc spring | 1 | 1512B108 |
| 20 | Plate assembly | 1 | 1512B020 | 114 | Type plate | 1 | 1512B114 |
| 20-3 | Distance bolt | 2 | 1512B020-3 | 119 | Plain washer | 1 | BRB8.4 |
| 23 | Disc nut | 1 | 1512B023 | 120 | Locking nut M8 | 1 | 1512120 |
| 24 | Handle | 1 | 1512B024 | 124 | Chain bolt | 1 | 1512124 |
| 36 | Body cover | 1 | 1512B036 | 126 | Locking nut M6 | 1 | 1512126 |
| 40-1 | Ratchet cover | 1 | 1512B040 | 128 | Bolt M5 | 2 | 1512128 |

*) When ordering load chain specify the lifting height.



0,8 – 6,3 t Lever block 15B – exploded view

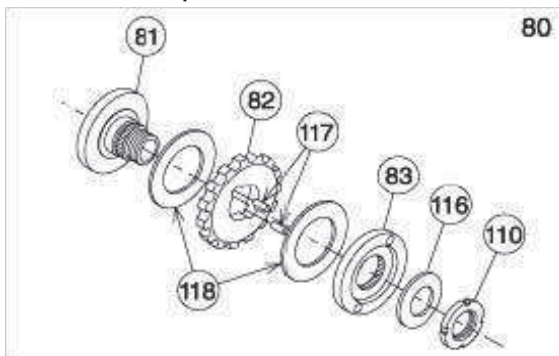
Spare parts list 0,8 – 6,3 t Lever block 15B

| Pos. | Description | Qty. | 0.8 t | 1.6 t | 3.2 t | 6.3 t |
|------|-----------------|------|-----------|-----------|-----------|-------|
| 1 | Pinion shaft | 1 | 1513B001 | 1515B001 | 1517B001 | |
| 2 | Pinion | 2 | 1513002 | 1515002 | 1517B002 | |
| 4 | Load gear | 1 | 1513004 | 1515B004 | 1517B004 | |
| 5 | Chain sheave | 1 | 1513B005 | 1515B005 | 1517B005 | |
| *) 6 | Load chain | 1 | 9020117 | 9020113 | 9020118 | |
| 7 | Pawl | 2 | 1513B007 | 1515B007 | | |
| 8 | Disc hub | 1 | 1513B008 | 1515B008 | | |
| 9 | Ratchet wheel | 1 | 1513B009 | 1515B009 | | |
| 12 | Chain guide | 2 | 1513B012 | 1515B012 | 1517B012 | |
| 15 | Stripper | 1 | 1513B015 | 1515B015 | 1517B015 | |
| 16 | Stop grip | 1 | 1513006-2 | 1515006-2 | 1517006-2 | |
| 18 | Gear-side plate | 1 | 1513B008 | 1515B018 | 1517018 | |

*) When ordering load chain specify the lifting height.

| Pos. | Description | Qty. | 0.8 t | 1.6 t | 3.2 t | |
|------|-------------------------|------|--------------|----------|----------|------------|
| 20 | Handle-side plate | 1 | 1513B020 | 1515B020 | 1517020 | |
| 23 | Disc nut | 1 | 1513B023 | 1515B023 | | |
| 24 | Operating handle | 1 | 1513B024 | 1515B024 | | |
| 30 | Spring Shaft | 1 | 1513030 | 1515030 | | |
| 31 | Shaft base | 1 | 1513031 | 1515031 | | |
| 32 | Handle pawl | 1 | 1513B032 | 1515B032 | | |
| 37 | Gear cover | 1 | 1513B037 | 1515B037 | 1517B037 | |
| 40 | Cover assembly | 1 | 1513B040 | 1515B040 | 1517B040 | |
| 42 | Ratchet wheel | 1 | 1513B042 | | | |
| 48 | Top hook assembly | 1 | 1513B048 | 1515B048 | 1517B048 | |
| 51 | Yoke pin | 1 | 1513B051 | 1515B051 | 1517B051 | |
| 53 | Bottom hook assembly | 1 | 1513B053 | 1515B053 | 1517B053 | |
| 53-3 | Tail holder | 2 | ----- | | | 1520B053-3 |
| 55 | Chain sheave idle | 1 | ----- | | | 1520B055 |
| 56 | Wheel pin | 1 | ----- | | | 1520B056 |
| 58 | Collar for idle sheave | 2 | ----- | | | 1520B058 |
| 59 | Collar for pinion shaft | 1 | 1513B059 | 1517B059 | | |
| 74 | Safety latch assembly | 2 | 1513B074 | 1515B074 | 1520B074 | |
| 101 | Change-over spring | 1 | 1513101 | 1515101 | | |
| 103 | E-ring | 2 | 1513B103 | 1515B103 | | |
| 104 | Pawl spring | 2 | 1513B104 | 1515B104 | 1517B104 | |
| 105 | Brake disc | 2 | 1513B105 | 1515B105 | | |
| 106 | Free-wheeling spring | 1 | 1513B106 | 1515B106 | 1517B106 | |
| 107 | Spring nut | 8 | M8 | | M10 | |
| 111 | Spring nut | 2 | M6 | M8 | | |
| 113 | Upset bolt | 1 | M6x10 | M8x12 | | |
| 114 | Type plate | 1 | 1513B114 | 1515B114 | 1517B114 | |
| 119 | Plain washer | 1 | BRB8,4 | | | |
| 120 | Nylon nut | 1 | 1513120 (M8) | | | |
| 124 | Chain bolt | 1 | 1513124 | 1517124 | 1520124 | |
| 128 | Bolt | 2 | 1513128 | | | |
| 141 | Bolt | 3 | ----- | | | 1520141 |
| 142 | Spring nut | 3 | ----- | | | 1520142 |
| 143 | Knock pin | 1 | ----- | | | 1520143 |

Pos. 80 Overload protection device



The standard model Lever block 15B can be modified into model 15BF (Lever block with overload protection device) by replacing pos. No. 23 Disc nut with pos. 80 Overload protection device.

Overload protection device – exploded view

Spare parts list pos 80 – Overload protection device

| Pos. | Description | Qty. | 0.5 t | 0.8 t | 1.6 t | 3.2 t | 6.3 t |
|------|-------------------------------------|------|----------|----------|----------|----------|----------|
| 80 | Overload protection device assembly | 1 | 1512B080 | 1513B080 | 1515B080 | 1517B080 | 1520B080 |
| 81 | Disc nut | 1 | 1512B081 | 1513B081 | 1515B081 | | |
| 82 | Friction gear | 1 | 1512B082 | 1513B082 | 1515B082 | | |
| 83 | Friction hub | 1 | 1512B083 | 1513B083 | | | |
| 110 | Locking nut | 1 | 1512B110 | | | | |
| 116 | Coned disc spring | 1 | 1512B116 | | | | |
| 117 | Cylindrical roller | 2 | 1512B117 | 1513B117 | | | |
| 118 | Friction disc | 2 | 1512B118 | 1513B118 | | | |

SVERO LIFTING AB
 Telefon: 036-31 65 70, telephone +46 36 31 65 70, telefax: 036-31 65 79
www.svero.com, E-mail: info@svero.com

NB 2010-03-08