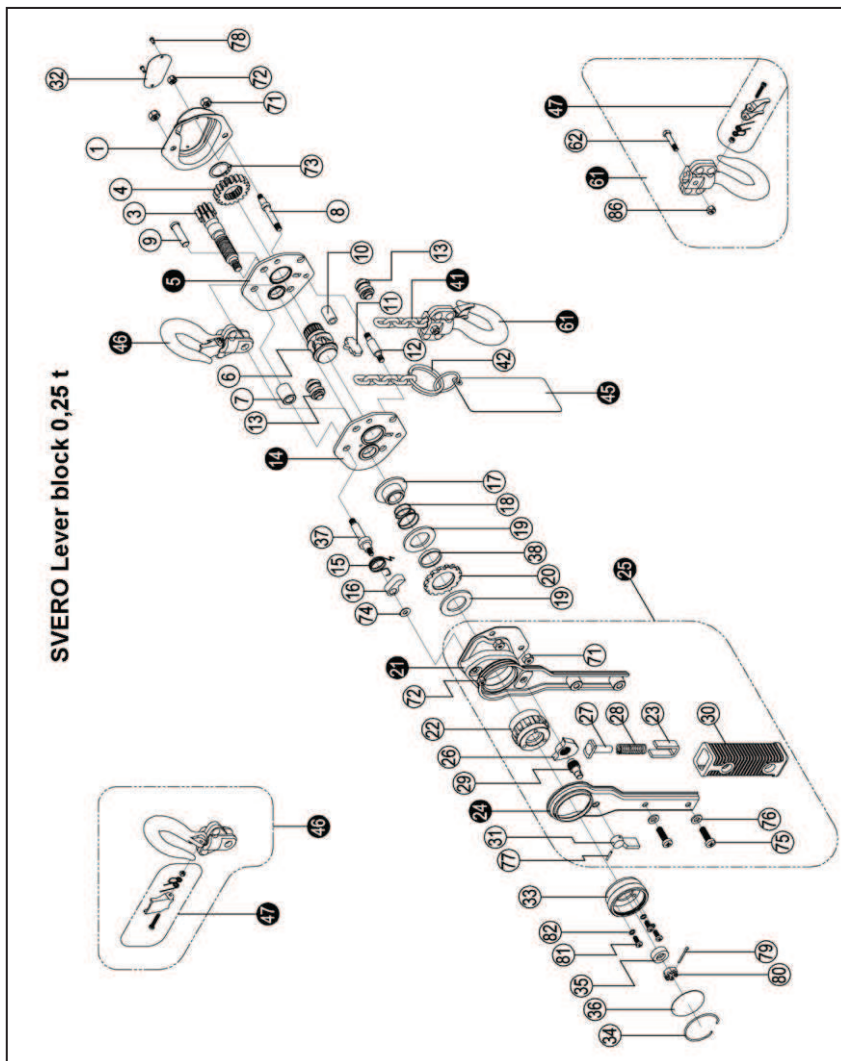


SVERO Lever block -15 – spare parts 0,25 t

When ordering spare parts, specify model, WLL, part number and the quantity needed.

When ordering chain, also specify lifting height.

If the load chain has been damaged or worn out the load sheave probably has to be replaced.



SVERO Lever block -15 – spare parts list 0,25 t

Pos	Description	0,25 t
1	Gear cover	1511001
3	Drive shaft	1511003
4	Splined gear	1511004
5	Right side plate assy	1511005
6	Load chain sprocket	1511006
7	Bushing A	1511007
8	Stay bolt C	1511008
9	Top hook shaft	1511009
10	Bushing B	1511010
11	Chain stripper	1511011
12	Stay bolt A	1511012
13	Guide roller	1511013
14	Left side plate assy	1511014
15	Pawl spring	1511015
16	Pawl	1511016
17	Brake seat	1711017
18	Free spring	1811018
19	Friction plate	1511019
20	Ratchet wheel	1511020
21	Ratchet wheel cover assy	1511021
22	Changeover ratchet wheel	1511022
23	Spring seat	1511023
24	Right lever handle assy	1511024
25	Handle assy	1511025
26	Changeover pawl	1511026
27	Spring pin	1511027
28	Changeover spring	1511028

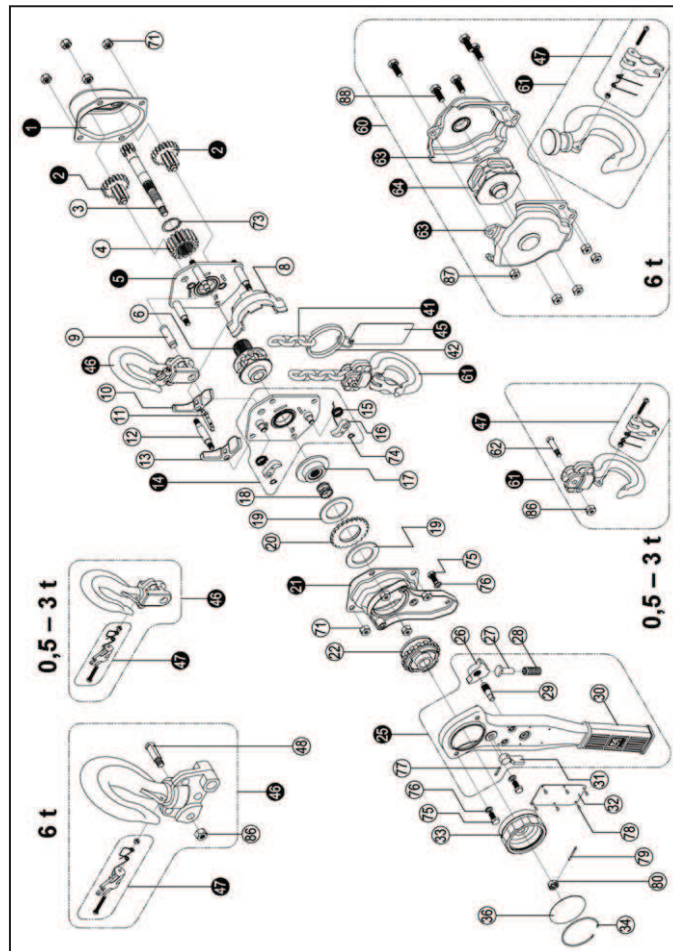
Pos	Description	0,25 t
29	Selector plate shaft	1511029
30	Handle rubber grip	1511030
31	Selector plate	1511031
32	Name plate	1511032
33	Hand wheel	1511033
34	Steel wire retainer	1511034
36	Hand wheel name plate	1511036
37	Stay bolt B	1511037
38	Bushing	1511038
41	Load Chain	1511041
42	Chain ring	1511042
45	Warning plate assy	1511045
46	Top hook assy	1511046
47	Safety latch assy	1511047
61	Bottom hook assy	1511061
62	Bottom hook pin	1511062
71	Metal lock nut	1511071
72	Metal lock nut	1511072
73	Circlip	1511073
74	Pawl washer	1511074
75	Cross head screw	1511075
76	Flat washer	1511076
77	Spring pin	1511077
78	Name plate rivet	1511078
79	Split pin	1511079
80	Hexagon nut	1511080
81	Cross head screw	1511081
82	Light spring washer	1511082
88	Metal lock nut	1811088

SVERO Lever block -15 – spare parts 0,5 – 6 t

When ordering spare parts, specify model, WLL, part number and the quantity needed.

When ordering chain, also specify lifting height.

If the load chain has been damaged or worn out the load sheave probably has to be replaced.



Pos	Description	0,5 t	1 t	1,5 t	3 t	6 t
1	Gear cover assy	1512001	1514001	1515001	1517001	1520001
2	Disc gear assy	1512002	1514002	1515002	1517002	1520002
3	Drive shaft	1512003	1514003	1515003	1517003	1520003
4	Splined gear	1512004	1514004	1515004	1517004	1520004
5	Right side plate assy	1512005	1514005	1515005	1517005	1520005
6	Load chain sprocket	1512006	1514006	1515006	1517006	1520006
8	Chain guide	1512008	1514008	1515008	1517008	1520008
9	Top hook shaft	1512009	1514009	1515009	1517009	1520009

Pos	Description	0,5 t	1 t	1,5 t	3 t	6 t
10	Chain leader A	1512010	1514010	1515010	1517010	1520010
11	Chain stripper	1512011	1514011	1515011	1517011	1520011
12	Stay bolt B	1512012	1514012	1515012	1517012	1520012
13	Chain leader B	1512013	1514013	1515013	1517013	1520013
14	Left side plate assy	1512014	1514014	1515014	1517014	1520014
15	Pawl spring	1512015	1514015	1515015	1517015	1520015
16	Pawl	1512016	1514016	1515016	1517016	1520016
17	Brake seat	1712017	1514017	1515017	1517017	1520017
18	Free spring	1812018	1514018	1515018	1517018	1520018
19	Friction plate	1512019	1514019	1515019	1517019	1520019
20	Ratchet wheel	1512020	1514020	1515020	1517020	1520020
21	Ratchet wheel cover assy	1512021	1514021	1515021	1517021	1520021
22	Changeover ratchet wheel	1512022	1514022	1515022	1517022	1520022
25	Handle assy	1512025	1514025	1515025	1517025	1520025
26	Changeover pawl	1512026	1514026	1515026	1517026	1520026
27	Spring pin	1512027	1514027	1515027	1517027	1520027
28	Changeover spring	1512028	1514028	1515028	1517028	1520028
29	Selector plate shaft	1512029	1514029	1515029	1517029	1520029
30	Handle rubber grip	1512030	1514030	1515030	1517030	1520030
31	Selector plate	1512031	1514031	1515031	1517031	1520031
32	Name plate	1512032	1514032	1515032	1517032	1520032
33	Hand wheel	1512033	1514033	1515033	1517033	1520033
34	Steel wire retainer	1512034	1514034	1515034	1517034	1520034
36	Hand wheel name plate	1512036	1514036	1515036	1517036	1520036
41	Load Chain	1512041	1514041	1515041	1517041	1520041
42	Chain ring	1512042	1514042	1515042	1517042	1520042
45	Warning plate assy	1512045	1514045	1515045	1517045	1520045
46	Top hook assy	1512046	1514046	1515046	1517046	1520046
47	Safety latch assy	1512047	1514047	1515047	1517047	1520047
48	Top hook pin	-	-	-	-	1520048
60	Bottom hook assy	1512060	1514060	1515060	1517060	1520060
61	Hook assy	1512061	1514061	1515061	1517061	1520061
62	Bottom hook pin	1512062	1514062	1515062	1517062	1520062
63	Bottom hook connector assy	1512063	1514063	1515063	1517063	1520063
64	Idler sheave assy	1512064	1514064	1515064	1517064	1520064
71	Metal lock nut	1512071	1514071	1515071	1517071	1520071
73	Circlip	1512073	1514073	1515073	1517073	1520073
74	Circlip	1512074	1514074	1515074	1517074	1520074
75	Bolt	1512075	1514075	1515075	1517075	1520075
76	Light spring washer	1512076	1514076	1515076	1517076	1520076
77	Spring pin	1512077	1514077	1515077	1517077	1520077
78	Name plate rivet	1512078	1514078	1515078	1517078	1520078
79	Split pin	1512079	1514079	1515079	1517079	1520079
80	Hexagon nut	1512080	1514080	1515080	1517080	1520080
86	Metal lock nut	1512086	1514086	1515086	1517086	1520086
87	Metal lock nut	1512087	1514087	1515087	1517087	1520087
88	Bolt	1512088	1514088	1515088	1517088	1520088