

# VacuBoyMini VBM

The lightweight up to 350 kg

## Setup and application

Due to the compact design with low dead weight, this vacuum lifter is suitable for smaller plates and inherently stable loads such as canisters, barrels and containers. Depending on the requirements, the device can be equipped with a single suction pad or attachments with two or four suction pads. For various applications, the device can also be equipped with a quick-change coupling, which means that the grippers can be used as required.

- Power supply via cable with CEE plug
- Acoustic warning device with power failure message
- Optionally with quick-change coupling for different suction cups
- Loading and unloading of CNC machines with small parts
- Small, compact and inherently stable workpieces
- Barrels, boxes and containers
- Glass and window components
- "ACCU" version for "off mains" operation



**VacuBoyMini VBM-ACCU-75KG**  
For the transport of truck tank containers with a double attachment



**VacuBoyMini VBM-ACCU-125KG**  
with quadruple suction pad for feeding a CNC system



**VacuBoyMini VBM-ACCU-50KG**  
With articulated special grippers for transporting pipes with different diameters



**VacuBoyMini VBM-125KG**  
handling of copper coils using a 4-fold attachment

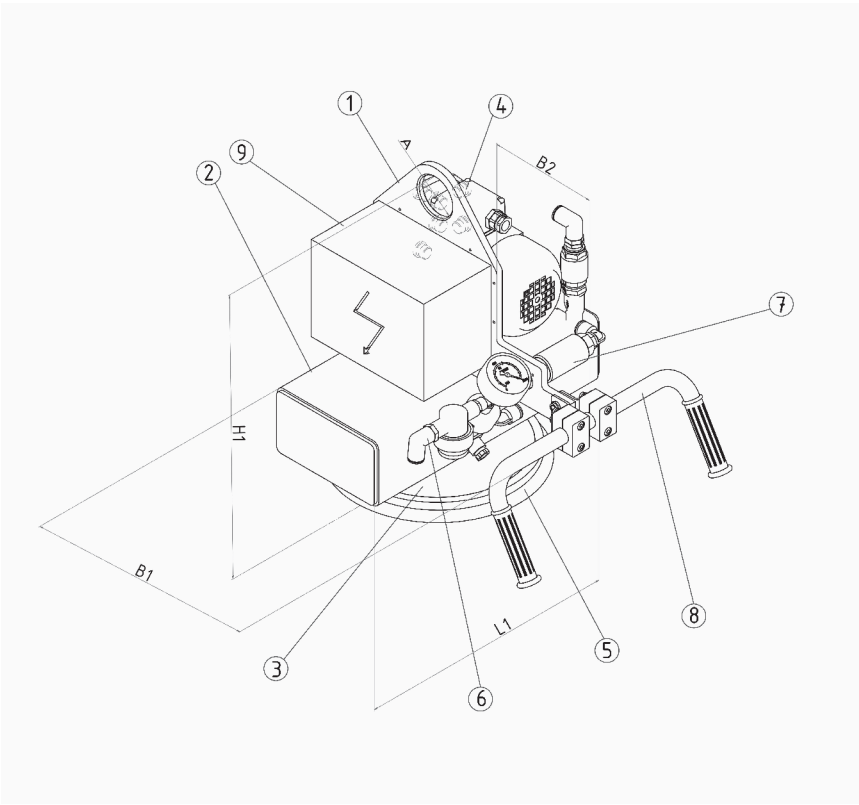
# VacuBoyMini VBM

Technical specifications



**VacuBoy - product range**

More about our VacuBoy product range and many application examples and videos can be found here. Scan the QR code to get started.



- 1 Suspension frame with suspension eye
- 2 Separate vacuum reserve tank
- 3 Flange plate for suction pads or attachments
- 4 Vacuum pump with check valve
- 5 Suction cups or attachments
- 6 Distribution line with vacuum filter and visual control vacuum gage
- 7 Vacuum valve for suction/release
- 8 Ergonomic manipulating handle
- 9 Electronic warning device EW-0

Load (kg)	Type	Workpiece dimensions		Vacuum pump (m³/h)	Number Suction cups	L1	B1	B2	H	A	Own weight (kg)
		min (mm)	max (mm)			(mm)	(mm)	(mm)	(mm)	(mm)	
125	VBM-1	300x300	1.000x1.000	T4.8/TF4.2	1	250	250	270	450	60	22
	VBM-2	800x300	1.500x1.000	T4.8/TF4.2	2	800	250	270	550	60	25
	VBM-4	1.000x500	2.500x1.250	T4.8/TF4.2	4	800	400	270	550	60	30
250	VBM-1	400x400	1.000x1.000	T4.8/TF4.2	1	250	250	270	450	60	23
	VBM-2	1.000x400	1.500x1.000	T4.8/TF4.2	2	800	250	270	550	60	26
	VBM-4	1.000x600	2.500x1.250	T4.8/TF4.2	4	800	400	270	550	60	32
350	VBM-1	500x500	1.000x1.000	T4.8/TF4.2	1	250	250	270	450	60	24
	VBM-2	1.000x500	1.500x1.000	T4.8/TF4.2	2	800	250	270	550	60	28
	VBM-4	1.000x800	2.500x1.250	T4.8/TF4.2	4	800	400	270	550	60	36