

VacuBoyVario VBV

The variable lifter up to 500 kg

Setup and application

A variable vacuum lifter that can be used universally. By placing the individual suction pads appropriately, workpieces can be transported both horizontally and vertically. In addition, lying loads can also be brought into a vertical position by tipping them up. Each suction cup is equipped with a manual slide valve and a vacuum gage.

- Power supply via cable with CEE plug
- Acoustic warning device with power failure message
- Horizontal and vertical transport depending on the arrangement of the suction cups
- Positioning of workpieces over longitudinal and transverse axes
- For smooth and structured surfaces
- Large-area panel materials of all kinds
- Furniture and containers
- "ACCU" version for "off mains" operation



VacuBoyVario VBV-125KG
Handling of window units up to 4,000 mm in length



VacuBoyVario VBV-250KG
Setting up plastic panels with a length of up to 8,000 mm



VacuBoyVario VBV-125KG
Conversion of furniture components in the mobile home industry



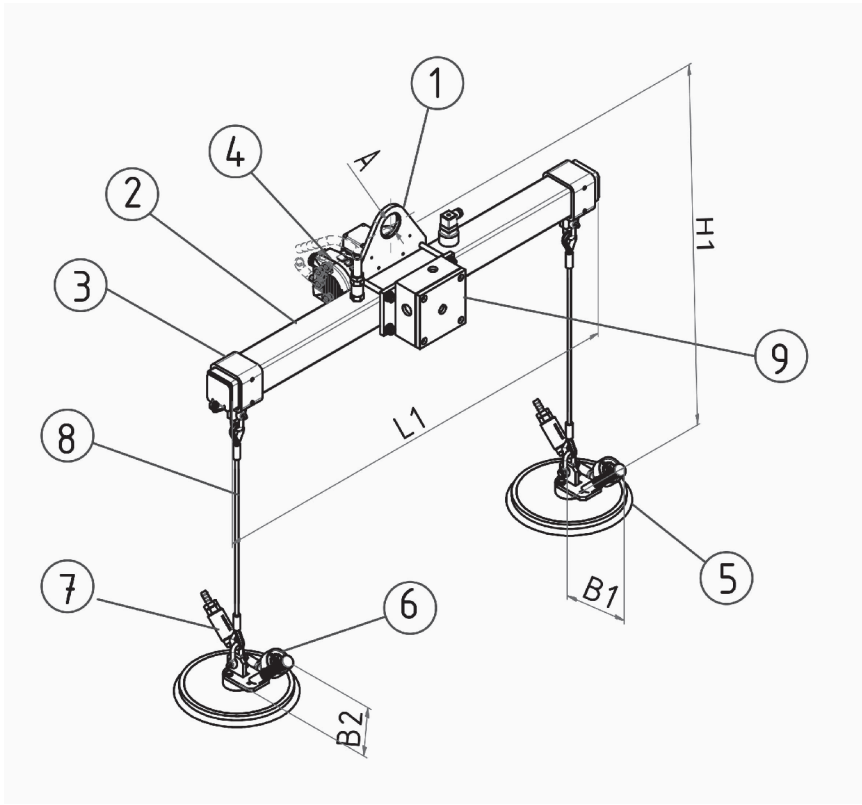
VacuBoyVario VBV-125KG
Handling of completely prefabricated furniture parts in the final assembly

VacuBoyVario VBV

Technical specifications

VacuBoy - product range

More about our VacuBoy product range and many application examples and videos can be found here. Scan the QR code to get started.



- 1 Suspension frame with suspension eye
- 2 Stringers with integrated vacuum reserve tank
- 3 Holder for wire suspension for suction cups
- 4 Vacuum pump with check valve
- 5 Suction pads, adjustable and clampable
- 6 Distribution line with vacuum filter and visual control vacuum gage
- 7 Vacuum valve for suction/release
- 8 Wire suspension with shackle
- 9 Electronic warning device EW-O

Load (kg)	Type	Workpiece dimensions		Vacuum pump (m³/h)	Number Suction cups	L1 (mm)	B1 (mm)	B2 (mm)	H1 (mm)	A (mm)	Own weight (kg)
		min (mm)	max (mm)								
125	VBV80-2	800x400	2,500x1,250	T 4.8	2	1,800	800	600	470	80	50
	VBV80-4	800x400	3,000x1,500	T 4.8	4	3,000	1,200	900	470	80	60
250	VBV80-2	800x400	2,500x1,250	T 4.8	2	1,800	800	600	470	80	60
	VBV80-4	800x400	3,000x1,500	T 4.8	4	3,000	1,200	900	470	80	70
500	VBV80-2	800x400	2,500x1,250	T 4.8	2	1,800	800	600	470	80	70
	VBV80-4	800x400	3,000x1,500	T 4.8	4	3,000	1,200	900	470	80	80