

# VacuCoil VC-90E

## Tilting of strip steel rings and coils up to 2.500 kg

### Setup and application

A vacuum lifter individually adapted to your requirements for picking up lying or standing coils for feeding coiler mandrels. The suction chambers are individually designed and, thanks to a flattened design, can also accommodate standing coils with different diameters. It is operated using an ergonomic control handle with all the necessary control functions.

- Robust, weight-optimized steel construction
- Individually adapted suction plates and suction chambers
- High level of operational reliability thanks to special, replaceable seals
- Acoustic warning device with power failure message
- Flattened version for picking up different diameters
- Plexiglas version or viewing window for centric positioning
- Suction chambers that can be switched on and off for diameter adjustment
- Transfer, storage and retrieval or order picking



**VacuCoil VC-90E-1000KG**  
For aluminum coils up to 1,800 mm in diameter



**VacuCoil VC-90E-800KG**  
For plastic coils in the production of roller shutter components



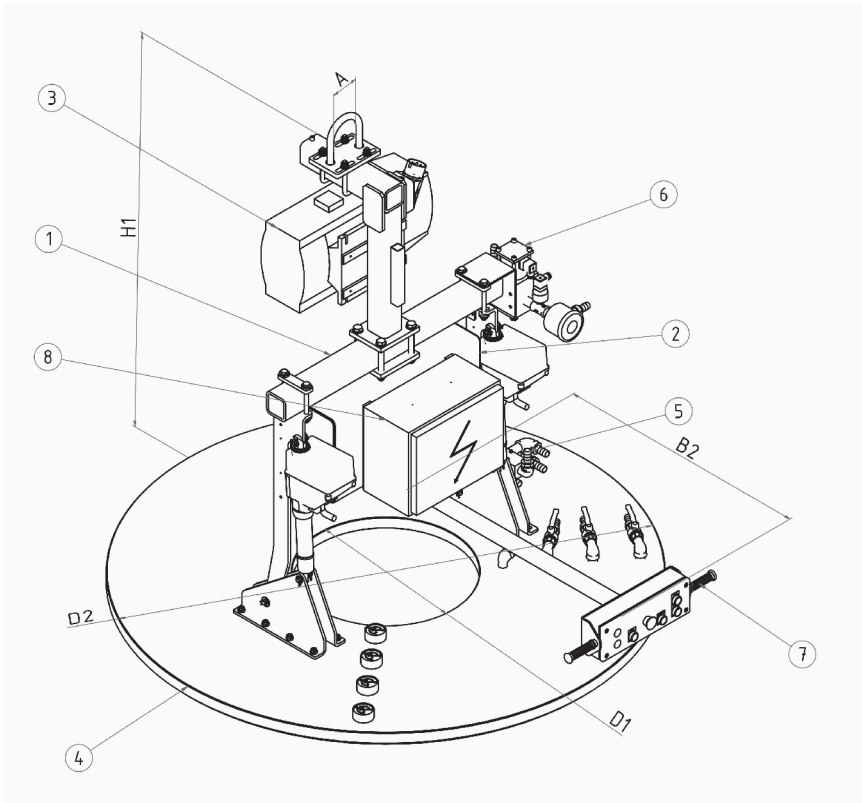
**VacuCoil VC-90E-1250KG**  
For fitting a coiler mandrel with copper coils

# VacuCoil VC-90E

## Technical specifications



**VacuCoil product range**  
More about our VacuCoil product range and many application examples and videos can be found here. Just scan the QR code and get started.



- 1 Suspension frame with tilt drives and suspension eye
- 2 Vacuum reserve tank
- 3 Vacuum pump with check valve
- 4 Suction plate with individually adapted suction chambers
- 5 Distribution line with vacuum filter and visual control vacuum gage
- 6 Vacuum valve for suction/release
- 7 Ergonomic manipulating handle
- 8 Electronic warning device EW-0

Load (kg)	Type	Coil diameter		Coil height (mm)	Vacuum pump (m³/h)	Suction chambers	D1	D2	B1	H1	A	Own weight (kg)
		internal (mm)	external (mm)				internal (mm)	external (mm)	(mm)	(mm)	(mm)	
250	VC-90E	100 - 500	350 - 2,500	25 - 1,000	16 - 40	1 - 8	75 - 450	400 - 2,650	600/-1,200	700 - 1,000	100	150 - 200
500	VC-90E	100 - 500	350 - 2,500	25 - 1,000	16 - 40	1 - 8	75 - 450	400 - 2,650	600/-1,200	700 - 1,000	100	175 - 225
750	VC-90E	100 - 500	350 - 2,500	25 - 1,000	16 - 40	1 - 8	75 - 450	400 - 2,650	600/-1,200	700 - 1,000	100	200 - 250
1,000	VC-90E	100 - 500	350 - 2,500	25 - 1,000	25 - 63	1 - 8	75 - 450	400 - 2,650	600/-1,200	700 - 1,000	100	225 - 275
1,250	VC-90E	100 - 500	350 - 2,500	25 - 1,000	25 - 63	1 - 8	75 - 450	400 - 2,650	600/-1,200	700 - 1,000	100	500 - 650
1,500	VC-90E	100 - 500	350 - 2,500	25 - 1,000	25 - 63	1 - 8	75 - 450	400 - 2,650	600/-1,200	700 - 1,000	100	550 - 700
1,750	VC-90E	100 - 500	350 - 2,500	25 - 1,000	25 - 63	1 - 8	75 - 450	400 - 2,650	600/-1,200	700 - 1,000	100	600 - 750
2,000	VC-90E	100 - 500	350 - 2,500	25 - 1,000	40 - 100	1 - 8	75 - 450	400 - 2,650	600/-1,200	1,000 - 1,500	160	750 - 950
2,250	VC-90E	100 - 500	350 - 2,500	25 - 1,000	40 - 100	1 - 8	75 - 450	400 - 2,650	600/-1,200	1,000 - 1,500	160	850 - 1,100
2,500	VC-90E	100 - 500	350 - 2,500	25 - 1,000	63 - 160	1 - 8	75 - 450	400 - 2,650	600/-1,200	1,000 - 1,500	160	950 - 1,250