

VacuWood VWB

Horizontal handling of thick planks up to 500 kg

Setup and application

A special vacuum lifter for wood and planks with lengths of up to 8,000 mm. The vacuum lifters have powerful vacuum generators that also allow handling of rough-sawn workpieces. Thanks to special, exchangeable seals, handling is absolutely safe and gentle on the product. The vacuum lifters are equipped with manual vacuum control as standard and have an ergonomic operating handle with sufficient safety length. An acoustic warning device warns of insufficient vacuum or power failure.

- Power supply via cable with CEE plug
- Robust and powerful vacuum generator
- Acoustic warning device with power failure message
- Manual vacuum control in the operating handle
- Horizontal transport of rough sawn materials
- Stacking, transferring and picking of sheet material
- Loading and unloading of saw frames



VacuWood VW-250KG
For stacking wooden planks after a dividing saw.



VacuWood VW-500KG
For feeding logs to a lattice saw.



VacuWood VW-250KG
With special suction pads for rough-sawn surfaces



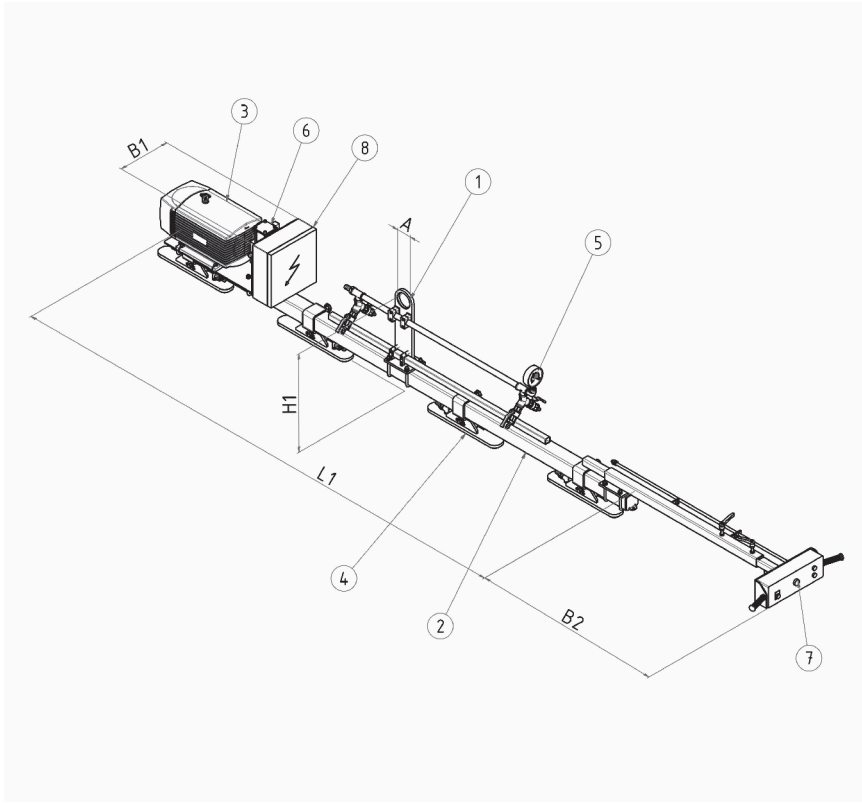
VacuWood VW-250KG
For transporting lumber up to 6,000 mm

VacuWood VWB

Technical specifications



Wood product range - overview
You can find more about our wood product range and many application examples and videos here. Just scan the QR code and get started.



- 1 Suspension eye
- 2 Stringer
- 3 Vacuum pump with check valve
- 4 Suction pads, adjustable and clampable
- 5 Distribution line with vacuum filter and visual control vacuum gage
- 6 Vacuum valve for suction/release
- 7 Ergonomic manipulating handle
- 8 Electronic warning device EW-0

Load (kg)	Type	Workpiece dimensions		Vacuum generator (m³/h)	Number Suction cups	L1	L2	B1	H1	A	Own weight (kg)
		min (mm)	max (mm)			(mm)	(mm)	(mm)	(mm)	(mm)	
125	VWB-125	1,500 x 100	6,000 x 800	25	2	3,000	1,800	300	550	80	115 - 130
250	VWB-250	1,500 x 120	6,000 x 800	25	2	3,000	1,800	300	550	80	120 - 140
375	VWB-375	1,500 x 170	6,000 x 800	40	2	3,000	1,800	300	550	80	125 - 150
500	VWB-500	1,500 x 250	6,000 x 800	40	2	3,000	1,800	300	550	80	130 - 160

VacuWood VWLB

Horizontal handling of laminated beams up to 1,000 kg

Setup and application

A special vacuum lifter for timber and laminated beams with lengths of up to 24,000 mm. The vacuum lifters consist of a weight-optimized steel construction in which all necessary vacuum components are integrated. Special suction cups with exchangeable seals suspended from a rocker structure can adapt to the deflection of the long pieces of wood and thus guarantee absolutely safe handling. Operation is either via an ergonomic control handle, via a pendant control or by radio.

- Power supply via cable with CEE plug
- Robust and powerful vacuum generator
- Acoustic warning device with power failure message
- Special rocker suspension for deflection adjustment
- Handling of foil-wrapped logs
- Horizontal transport of rough sawn materials
- Stacking, relocating and picking of logs



VacuWood VWLB-250
For laminated beams wrapped in film up to a length of 14,000 mm



VacuWood VWLB-500
with double suction cups, simultaneous lifting of double-layer wood with a length of up to 12,000 mm possible



VacuWood VWLB-250KG
For shifting logs up to 12,000 mm long



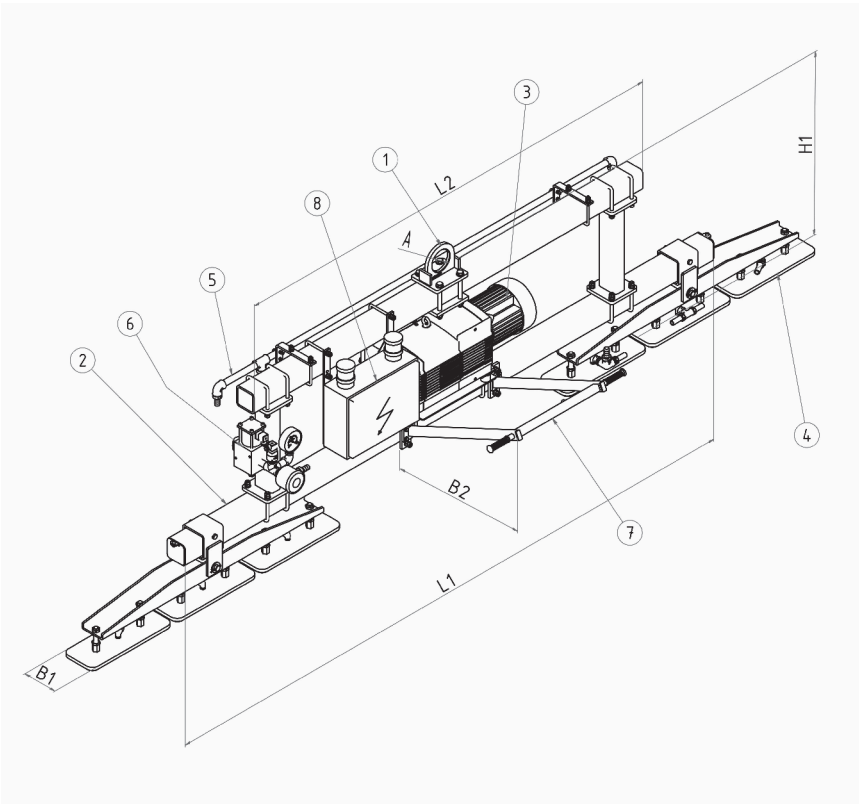
VacuWood VWLB-750KG
For order picking of 16,000 mm long pieces of wood in a stanchion store

VacuWood VWLB

Technical specifications



Wood product range - overview
You can find more about our wood product range and many application examples and videos here. Just scan the QR code and get started.



- 1 Suspension eye
- 2 Stringer
- 3 Vacuum pump with check valve
- 4 Suction pads with rocker suspension, adjustable and clampable
- 5 Distribution line with vacuum filter and visual control vacuum gage
- 6 Vacuum valve for suction/release
- 7 Ergonomic manipulating handle
- 8 Electronic warning device EW-0

Load (kg)	Type	Workpiece dimensions		Vacuum generator (m³/h)	Number Suction cups	L1	L2	B1	H1	A	Own weight (kg)
		min (mm)	max (mm)			(mm)	(mm)	(mm)	(mm)	(mm)	
250	VWLB-250	8,000 x 100	16,000 x 400	40	4/-8	6,000	1,800	300	550	120	125 - 140
500	VWLB-500	8,000 x 120	16,000 x 400	40	4/-8	6,000	1,800	300	550	120	130 - 150
750	VWLB-750	12,000 x 170	24,000 x 600	40	4/-8	10,000	1,800	300	550	120	150 - 180
1,000	VWLB-1000	12,000 x 250	24,000 x 600	40	4/-8	10,000	1,800	300	550	120	160 - 250



Our wood product range - Blog
Wood. A natural and versatile resource. However, one should not underestimate the logistical effort and expertise involved in handling this breathable raw material. But with us on your side, there's nothing that could go wrong. Find out in this blog post what we are offering.